

# Welton **NEWS**



*The summer reading challenge for children has begun (page 37) and the Cubs helped with litter picking (page 45)*

**August 2023**  
**Number 291**

Showing  
live  
sports  
on BT  
and Sky  
Sports



The Falconer bar is open Monday to Sunday inclusive  
from 7.30am to 9pm (subject to management discretion)  
Welton Manor Golf Centre reception is open 7.30am to 7.30pm (subject to  
management discretion)  
Party bookings and private functions available  
(conferences, weddings, birthdays, anniversaries, christenings, etc.)



Find us on:  
**facebook**

We are currently recruiting part-time staff for the summer season  
to be able to work in the bar/function room and reception. Some  
bar experience is preferred but is not essential. A friendly,  
outgoing personality is important to offer good hospitality.

You will be required to work some weekend and evening shifts. Approximately 15-20 hours per  
week.

There is the prospect of ongoing work for the right candidate.

Please e-mail your CV to [info@weltonmanorgolfcentre.co.uk](mailto:info@weltonmanorgolfcentre.co.uk).

The Falconer restaurant is unlikely to open in the foreseeable future.

The function room and downstairs restaurant area are available for private hire, including for weddings,  
christenings, parties, wakes and meetings. Outside catering can be used.

**Please call us on 01673 861888 for more information.**

## JOIN THE BEST VALUE-FOR-MONEY GOLF COURSE IN THE COUNTY!



### ANNUAL MEMBERSHIP PRICES

**1st August 2023 to 31st July 2024**

**Full membership:** £875    **OAP full membership:** £850

**Green fee membership:** £525 (£3 weekdays, £4 weekends)

**Budget membership:** £300 (£5 weekdays, £7 weekends)

**Budget under 25s membership:** £150 (£5 weekdays, £7 weekends)

#### Non-member visitor fees:

7am-2.52pm: £20 weekdays, £25 weekends

3pm-5.40pm: £15 weekdays, £20 weekends

5.48pm-7.32pm: £12 weekdays, £15 weekends

**9 Holes:** Weekdays £12  
Weekends £15

**GOLF OFFER:** weekdays £15 / weekends £20 with this voucher (**booking essential**)

#### Driving range open 7.30am to 7.30pm daily.

Prices are: basket hire £5 deposit; 25 balls £2; 50 balls £3; 100 balls £5

#### Fishing lake open from daylight to dusk (no overnight fishing)

Day ticket (2 rods maximum): £8    OAP/junior (2 rods maximum): £7

Extra rods: £2 per rod    Tickets available in the golf reception

**For details regarding any of the above, please phone 01673 861888**

Welton Manor Golf/Fishing Centre, Hackthorn Road, Welton, Lincoln, LN2 3PA

[www.weltonmanorgolfcentre.co.uk](http://www.weltonmanorgolfcentre.co.uk)

[info@weltonmanorgolfcentre.co.uk](mailto:info@weltonmanorgolfcentre.co.uk)

# Welton **NEWS**

c/o Parish Office  
7 Lincoln Road  
Welton, LN2 3HZ

*Editorial:* (01673) 860073  
*Advertising:* 861464  
*Distribution:* 07715 305860

Email: [weltonnews@gmail.com](mailto:weltonnews@gmail.com)  
Website: [www.weltonnews.org](http://www.weltonnews.org)

## Management Committee

*Chair:* Dorothy Russell  
*Treasurer:* Michael Daly  
*Advertisement Manager:*  
Penny Brackenbury  
*Distribution Manager:*  
Brian Prunnell

Roy Minnitt, Graham Nicholls,  
Oliver Castle, Nathan Jacklin

## Editorial

*Editor:* Dorothy Russell  
*Deputy Editor:* Graham Nicholls  
*Associate Editor:* Dawn Bowskill  
*Photographers:* Oliver Castle,  
Nathan Jacklin

## Contributions

Articles and letters should be  
emailed to [weltonnews@gmail.com](mailto:weltonnews@gmail.com)  
or sent to c/o Parish Office,  
7 Lincoln Road, Welton LN2 3HZ

## Copy Deadline

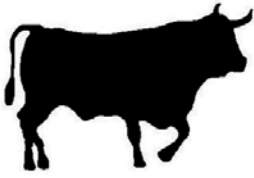
The copy deadline for both  
advertising and editorial is the  
15th of the month

*The management committee does not necessarily endorse the views expressed by contributors to this magazine, and while every effort is made to ensure the accuracy of information, no responsibility will be taken for any errors or omissions in this publication. All articles and information submitted to the editor must be attributable, otherwise these will not be printed. Confidentiality will, however, be maintained. The editor reserves the right to edit all material.*

©No part of this publication may be reproduced, stored in a retrieval system or transmitted in any form or by any means without the prior permission of the Welton **NEWS** Management Committee.

# Contents

Brownies: 2nd Welton .....	21
Community Bible Study .....	14
Dunholme Camera Club .....	10
Dunholme Ladies Club .....	19
Editorial .....	3
Edward Albert Spence .....	30
Emergency Numbers .....	12
From the Archives .....	47
Gardening Corner .....	33
Hackthorn School .....	42
Index to Advertisers .....	59
Jambusters WI .....	8
Letters to the Editor .....	32
Library and Community Hub .....	50
Lindsey u3a .....	26
Lindum Ladies Choir .....	14
Litter Picking .....	45
Methodist News .....	34
Moments in History .....	31
Nature Watch .....	54
Netball News .....	9
PC Meeting Report .....	38
PC Notice Board .....	39
PC Notices .....	44
PDA .....	30
Road Closures .....	19
St Barnabas Hospice .....	57
St Mary's Church News .....	6
Stonecliff Park Social Club .....	23
Summer Reading Challenge .....	37
Useful Contact Information .....	60
Village Notice Board .....	5
Walking Football .....	19
Welton & Dunholme Cricket Club .....	52
Welton Golf Society .....	26
Welton S&SC Football Club .....	29
William Farr Fencing .....	56
William Farr Flypast .....	51
William Farr Pre-school .....	12



## *The Black Bull*

9 Lincoln Road, Welton, LN2 3HZ

Tel: 01673 860220

E-mail: [blackbullwelton@hotmail.co.uk](mailto:blackbullwelton@hotmail.co.uk)

Website: [www.blackbullwelton.com](http://www.blackbullwelton.com)

Look for us on Facebook

Instagram: [blackbullwelton](https://www.instagram.com/blackbullwelton)

### KITCHEN OPENING TIMES

Tuesday 5pm to 8pm

Wednesday 11.30am to 2pm and 5pm to 8pm

Thursday 11.30am to 2pm and 5pm to 8pm

Friday 11.30am to 8pm

Saturday 10am to 8pm

Sunday 12 noon to 3pm

Bookings taken by phone (01673 860220) or via our Facebook page

**We are now open from 2pm on Tuesday**

**Now Showing BT & Sky Sports**

6th August: Community Shield, Manchester City vs Arsenal

12th August: Return of the Premier League

### **Ladies Do Lunch**

First Wednesday of every  
month

In aid of a local charity

### **Quiz Night**

**Every Tuesday night in the pub!**

Hosted by Andy Gostick

Starts at 8.30pm

Open the Box and 1st & 2nd cash  
prizes

+ Chips and cheese

# From the Editor



Oliver Castle

In July, the **NEWS** management committee decided to say 'thank you' to the people who deliver our magazine to your homes every month. They are all volunteers, most are 'of a certain age' (whether they like to admit it or not) and they go out in all weathers to make sure you get your "yellow book" each month. We treated them to a glass of wine or beer and some cheese and biscuits. The evening seemed to go very well as there was a lot of happy chatter and much laughter.

William Farr school celebrated their 70th anniversary with a flypast by the Red Arrows. We were invited along to take photographs, some of which are in this month's issue (the rest are on our website, along with some photos from their sports day). We hope to include news from the school on a regular basis.



William Farr invigilator team celebrating the end of year exams

The monthly Farmers' and Craft Market continues to be popular with residents. If you haven't been yet, the next one is on Thursday 12th August and it is well worth a visit. You can see photos of the July market on our website, which will give you some idea of what's on offer each month.

**Dorothy**

01673 860073 | [weltonnews@gmail.com](mailto:weltonnews@gmail.com)



Oliver Castle



Oliver Castle



FRESH BREAKFAST ROLLS & SANDWICHES

5 Lincoln Road, Welton, LN2 3HZ



## Hair Sense

All the latest styles and colours

Senior stylists

Competitive prices

01673 866668

Chair lift disabled access

## Sandwich Sense

Freshly made breakfast rolls

Hot lunchtime meals

Sandwiches

All products sourced locally

07881 706289

From 25th July Barista  
Freshly Ground Coffee



Lincolnshire Family History Society  
Registered Charity No. 1000724



### LINCOLN BRANCH

Would like to invite you to our branch meeting at

#### Queen's Park Community Hub

South Park, Lincoln, LN5 8EW  
Saturday 12th August at 2pm

Presentation by: **Adrian Gray**

*Katherine Willoughby, Duchess of Suffolk*

Was she the greatest woman of Tudor Lincolnshire?

Come and join us in person or via Zoom

E-mail your Zoom request and membership number, if applicable, to [lincolnbranch@lincolnshirefhs.org.uk](mailto:lincolnbranch@lincolnshirefhs.org.uk) and the Zoom link and login will be sent to your e-mail

We look forward to seeing you! Non-members welcome!

Telephone contact: Tracey Fairhurst 07941 245322

## Threshold

Threshold is a family church which has been serving the Lincoln villages for over 25 years. We all get together twice a month at Welton Village Hall. All are welcome!

Check out our website for more info:  
[www.thresholdchurch.co.uk](http://www.thresholdchurch.co.uk)

### COMING UP...

SUNDAY 6TH AUG

CHURCH

SUNDAY 20TH AUG

CHURCH

**ALL 10AM TO NOON IN  
WELTON VILLAGE HALL**

# The Village Notice Board

Village organisations can publicise their forthcoming events here.

Dates for inclusion should be submitted by the copy deadline (15th of the month).

## Every Tuesday

**Tuesday Wellbeing Group**  
Welton Village Hall, 10.30am to 12.30pm

## Thursday 3rd August

Vinyl Night  
St Mary's Church, 7.30pm

## Thursday 3rd August

Dunholme Ladies Club presents:  
*An evening with Alan Gray*,  
former Wimbledon tennis umpire  
Dunholme Village Hall, 7.30pm

## Thursday 3rd August

Lindsey u3a. Speaker Horace Liberty  
presents *Liberty of London*  
Welton Village Hall, 9.45am for 10.30am

## Thursday 10th August

Farmers' and Craft Market  
Welton Village Hall, 9am to 12 noon

## Saturday 12th August

Children's craft event  
Welton Library & Community Hub, 10am

## Saturday 12th August

Lincolnshire Family History Society  
Speaker Adrian Gray presents  
*Katherine Willoughby, Duchess of Suffolk*  
Queen's Park Community Hub, Lincoln, 2pm

## Sunday 6th August

Threshold Church  
Welton Village Hall, 10am to 12 noon

## Friday 18th August

Macular Society Lincoln & District  
Support Group meeting  
St Clements Court, Chapel Lane, Lincoln,  
11am to 1pm

## Sunday 20th August

Threshold Church  
Welton Village Hall, 10am to 12 noon

## Thursday 24th August

Lindsey u3a cuppa and a chat  
The Gardeners' Retreat, Scothern Nurseries,  
10.15am

## Sunday 20th August

Free Stonecliff Park Social Club  
**members only** BBQ  
Stonecliff Park, 12 noon to 4pm

## Saturday 2nd September

Jumble Sale in aid of St Barnabas Hospice  
Dunholme Village Hall, 1pm

## Wednesday 6th September

Stonecliff Park Social Club Springfields  
coach trip; departs 9am, returns 3pm

## Thursday 7th September

Lindsey u3a. Fools Gold folk singers  
Welton Village Hall, 9.45am for 10.30am

## Thursday 14th September

Farmers' and Craft Market  
Welton Village Hall, 9am to 12 noon

## Saturday 16th September

1st Welton Brownies Coffee Morning  
Welton Methodist chapel, 10am to 2pm

## Monday 25th September

Macmillan Coffee Morning  
Welton Village Library, 2pm to 3.30pm

## Friday 29th September

Macmillan coffee morning  
Stonecliff Park social club, 10am to 2pm

## Saturday 7th and Sunday 8th October

Murder Mystery: *Who Killed the Headmaster*,  
including supper (in aid of Hope for Justice)  
Welton Village Hall, 6.30pm

## Friday 20th October

Knit & Natter coffee morning in aid of the RNLI  
Stonecliff Park social club, 9.30am to 1pm

## Saturday 21st October

Welton-Moncé Twinning Association  
Call My Bluff wine tasting  
Welton Village Hall

## Saturday 28th October

PDA Autumn Fayre  
Welton Village Hall



## St Mary's Church News

### *Friendships Lost?*

After a fond farewell to Revd Adam and Revd Jane, I was reflecting on the loss of friends and neighbours. Sometimes, when individuals have been supportive and influential in our lives, we can feel like we have been left to fend for ourselves and it is difficult to know who to turn to. However, even if our friends leave us physically they are still with us in our memories and our hearts. Don't we all have those friends from school days who we haven't seen for years but with whom we communicate when there is a special event to celebrate or a sadder event which brings us back together? I certainly do! When we do communicate, we remember those silly little things that used to make us laugh and the memories come to life again, we are reconnected. I think this is possibly what CS Lewis meant when he said: *Friendship...is born at that moment one person says to another: "What! You too? I thought that no one but myself...".* Such friendships survive the test of time.

Sometimes even fleeting acquaintances can have lasting memories; the person who came running up to you with the item you dropped, the person who smiled and said good morning when you had been having a bad day or the person who listened. However, like the news nowadays, we tend to focus on the negative side rather than positive life events and may even miss those positive moments entirely.

Each time we say goodbye we are enriching our lives with memories, some good, some not so good, of times spent together, secrets shared, laughter unsuppressed or companionable silence. Perhaps we need to try to focus on what we have gained from our friendship rather than what we have lost.

We haven't lost their friendship, we still have the friendship, albeit visiting is a longer journey, but technology makes keeping in touch a lot easier; long gone is the fight to get your tuppence in the slot of the public telephone – yes, I do remember!

As we look to the future, we need to contemplate what we have gained from our friendships; memories, wisdom, guidance, confidence and community, to name just a few.

As I draw to a close, I like to think that Adam and Jane would leave us with these words from 1 Thessalonians 5, *encourage one another and build each other up, just as in fact you are doing.*

Yours in Christ,

**Suzanne Maple**, *Licensed Reader*



## Church Services in August

During August, only one principal service will be held at a parish in the benefice. Please note those services held at St Germain's, Scothern, and St Chad's, Dunholme, are at an earlier time than those held at St Mary's, Welton.

6th	11am	Holy Communion, St Mary's church, Welton
13th	10.30am	Holy Communion, St Chad's church, Dunholme
	6pm	Evening prayer, St Mary's church, Welton
20th	9.15am	Holy Communion, St Germain's church, Scothern
27th	11am	Holy Communion, St Mary's church, Welton

**Morning Prayer:** Morning prayer is held every Tuesday to Friday at 9.15am on Zoom. Please visit our website ([weltondunholmescothernchurches.com](http://weltondunholmescothernchurches.com)) for further details.

## Threechurchespray

During August, St Mary's, St Chad's and St Germain's churches in our benefice will be praying for Welton streets as follows: Prebend Lane, Stonecliff Park and Moncé Close.

If you would like to join us as prayer triplets or would like to know a bit more before you make up your mind, please contact Glyn on 862358 or Dave on 860986.



**St Mary's Church, Welton  
Vinyl Night**

Thursday 3rd August at 7.30pm  
Everyone welcome

Music of the 50s, 60s & 70s  
Bring your own vinyl records if you have some  
Don't forget your own refreshment & favourite tipple

Any questions, call Carol or Glyn on 01673 862358 or e-mail  
[carol.glyn@lineone.net](mailto:carol.glyn@lineone.net)

Continuing on the first Thursday of every month

## Readings for August

Date	Sunday	1st Reading	2nd Reading	Gospel Reading
6th	Transfiguration of Our Lord	Daniel 7 9-10, 13-14	2 Peter 1 16-19	Luke 9 28-36
13th	10th Sunday after Trinity	Genesis 37 1-4, 12-28	Romans 10 5-15	Matthew 14 22-23
20th	11th Sunday after Trinity	Genesis 45 1-15	Romans 11 1-2a, 29-32	Matthew 15 [10-20] 21-28
27th	12th Sunday after Trinity	Exodus 1 8-2.10	Romans 12 1-8	Matthew 16 13-20

## From the Registers

**Baptism:** 16th July We welcome into God's family, **Joey Holmes**

## Light Up St Mary's

**The church will be specially flood lit in August for the following:**

♥ Wednesday 9th August: Remembering **Jason Matthews**. Remembering Jason, son, brother to Tanya and brother-in-law to Gee. *We miss you so much, Jason, and you are always in our thoughts every day and you will always be in our hearts. We love you so much, Jason. Love from Mama, Tanya and Gee xxx.*

Our lights will continue to shine out over the community during the coming months and our illuminated cross once again reminds us of the crucifixion of Jesus Christ and the amazing events of the first Easter.

If you would like to sponsor the lighting of the cross and the church, all we ask for is a donation of £10 to cover the costs, which you can also *gift aid* by using the form provided in the brochure, thus increasing your donation by an extra £2.50 at no extra cost to you.

So, this September, if you have a special family member or perhaps a close friend who is starting their new school, or maybe someone who is moving into further education at university and in new and strange surroundings, why not show them that you are thinking of them by marking the event through floodlighting the church in their name. You can use the brochure that can be found on the carousel at the back of the church or call me on 01673 861253 and/or drop me a line at 33 Musgraves Orchard, Welton, LN23NP. We will do the rest.

**Peter Everett**, ALM

---

End of St Mary's Church News



## Jambusters WI

We thoroughly enjoyed our July meeting when Janet Burke of JB Savvy Style, and Colour Me Beautiful advisor, gave a fabulous insight into the benefits of a personal style consultation.

Colours, clothing, make-up, even the shape and style of glasses we wear, all have a dramatic effect, not only on how we look, but how we feel. Janet gave us a real confidence boost!

We continue to enjoy the August break and some of you may even venture out for a picnic lunch. Neil Curtis will be our guest on Tuesday 5th September when he will get our culinary skills in shape as he guides us in the creation of our very own pork pie.

Come and say hello and try your luck on our chocolate tombola stall at the Dunholme Village Fete on Sunday 10th September.

**The Jambusters WI Committee Girls**

[jambusterswi@gmail.com](mailto:jambusterswi@gmail.com) | Facebook: *The Jambusters WI*

# Netball News

The Lincs County U11 Performance Academy has now concluded for 2023 with presentations at the final session. Congratulations to Eleanor Smyth (Year 5 Welton St Mary's) who was awarded "coaches' player". Well done, Eleanor!



With most clubs now in pre-season and fans getting ready to watch the World Cup finals in August (matches are on BBC), followed by the 2023 Commonwealth Youth Games, with netball included for the first time ever, the sport continues its upwards trajectory. This is also an apt description of the Dunholme and Welton community netball group, with three local teams playing in the Market Rasen League. Current standings are: Dynamites 3rd, Goaldiggers 4th, Bomber Birds 5th.

On 9th July, Bomber Birds and Dynamites travelled to a charity tournament at Worksop where, despite facing tough competition, all said they had a great day.

New players to the group have allowed the creation of two further teams; Welton Wildcats and Dunholme Diamonds. These teams have entered into the newly formed Cherry Willingham League along with the Cherry Bombs, a third team of ladies who also play in the above teams in the Market Rasen League.

Anyone who would like to join the group should contact Eloise Rimmer on Facebook.

**Karen Lawrence**

## Welcome to SEP Ltd

Domestic Gas, Heating &  
**Air Conditioning**

Installations, Repairs,  
Replacement and Servicing on all  
Domestic Gas Appliances and Air  
Conditioning!  
Keep cool this summer and get in  
touch for a *FREE*, no obligation  
quote on

**01522 454427**

E: [michael@sepltd.co.uk](mailto:michael@sepltd.co.uk)



**DUNHOLME LADIES CLUB  
PRESENT**

**"YOU CANNOT BE SERIOUS"**

TALES OF A WIMBLEDON UMPIRE 1988-2012

AN EVENING WITH

**ALAN GRAY MBE**

FORMER WIMBLEDON UMPIRE

**7.30 PM**

**3<sup>RD</sup> AUGUST 2023**

**AT DUNHOLME VILLAGE HALL**

WITH A FOCUS ON WIMBLEDON, ITS FAMOUS AND  
INFAMOUS STARS ALAN PROVIDES AN INTERESTING  
VIEW OF THE WORLD OF TENNIS.

DURING HIS 25 YEARS AT WIMBLEDON, ALAN HAS  
UMPIRED 77 MATCHES AND WAS A LINE JUDGE  
IN 6 FINALS INCLUDING BECKER VERSUS SAMPRASS  
AND AGASSI VERSUS IVANISOVIC.

**ENTRY £2.50 FOR NON-MEMBERS**

**REFRESHMENTS INCLUDED**

CONTACT SUE RAWSON 862552 FOR MORE INFORMATION

# Dunholme Camera Club

Here we are, shooting through the year having done some of our competitions, talks, demonstrations, day group meetings and much more. Each meeting is different, and we try and get good coverage of photographic subjects with a selection of meetings to suit all members, from those who are just starting out on their photographic journey to those progressing up the ladder who are more capable with their cameras. We always try to help everyone along the journey to improve their photography skills.

So, what do we have coming up in August? We start off on 3rd August with a simple competition, *Straight from Camera*; a competition where everyone can join in as all you need to do is take the picture and present it digitally for the judge to critique. I will be judging this competition and giving tips on how to improve the images and, of course, coming up with the winners. On the 17th we have a Zoom meeting when an outside speaker will be giving us a talk on landscape/ seascape photography; in fact, Tony North will be talking all things 'scapes'. Finally, on 31st August we will have a practical night at the club when we will be doing some portraiture. Members will need to bring their cameras to have a go at something that might be new to some of them. If there is anyone out in the community who would like to come along and sit for us on the night that would be greatly appreciated; age really doesn't matter but 15 or older would be the best and anyone under 18 MUST be accompanied by a parent or guardian. Please get in touch with me to make arrangements if you want to sit for us that night. We will offer the sitters some digital images of themselves.

Well, that's it for August but don't forget to check out our website or contact me for more information.

## Grahame Dunkin

Tel: 860469 | [dunholmecc@btinternet.com](mailto:dunholmecc@btinternet.com) | [www.dunholmecameraclub.co.uk](http://www.dunholmecameraclub.co.uk)



**COMMUNITY**  
BIBLE STUDY  
UNITED KINGDOM

Please join us at **Dunholme Old School**, as together we study the treasures in the **Book of Acts**

We meet on **Wednesdays** during term-time, from **9.30am to 11.30am**

Term starts on **Wednesday 13th September** with an introduction/registration morning. The first study is scheduled for 20th September.

- Refreshments
- Prayer
- A discussion of the passage studied during the week, sharing our answers
- A short talk, applying what we have learned

**We would love you to join us!**

Contact Jane on 07952 425042 for more details

MURDER MYSTERY MURDER  
MYSTERY MURDER MYSTERY

## Who Killed the



Headmaster?

Play detective and discover who killed the Headmaster before they get to you!

7TH & 8TH OCTOBER 2023  
STARTS AT 6:30PM  
TICKETS AT £7/£15 EACH  
SUPPER INCLUDED  
WELTON VILLAGE HALL



**HOPE FOR JUSTICE**  
Change lives. End slavery.

**Tickets available from Joy on 07789987688**

**All proceeds to Hope for Justice**



**Warm Lincs**  
PLUMBING & HEATING

## All plumbing & heating work undertaken

- No job too small
- Boiler servicing & repairs
- Boiler replacements
- Central heating repairs
- Friendly & reliable service
- Over 20 years experience



**07555 003224** [warmlincs@gmail.com](mailto:warmlincs@gmail.com)



## K9 Trim & Style

We offer a kind, caring approach and always put your pet first

We give advice on the best care and style for your loved one

### Dog Groomers:

**Joyce Linder** – Over 20 years' experience City & Guild qualified

Contact: 07889 740450

**Sally Parkinson** – CSP Trained by the ICMG

Contact: 07342 128120

**5 Dunholme Road**  
**Welton**  
**LN2 3RS**



## William Farr Pre-School

Another year comes to an end and we are preparing to say goodbye to our older children as they leave us to start their next adventure at school.

It has been a great pleasure to care for the children and watch them grow and develop over the last two years and we wish them all the luck in the world as they move onto 'big' school.

Our pre-school is conveniently situated within the grounds of Welton St Mary's Primary Academy, and we enjoy close links with the school. We are a long established organisation with a team of highly experienced and qualified staff. We offer a safe, caring and stimulating environment of indoor and outdoor play and learning. We are open Monday to Thursday from 8.50am to 3.30pm and Friday from 8.50am to 12 noon.

If you are looking for a pre-school for your son or daughter, we would be delighted to see you and show you around. Please ring and arrange an appointment with our leader.

**Mrs Sharon Rumbellow, Leader**

Tel: 07759 937556

### EMERGENCY SERVICES

*In emergency dial 999 or 101; if your call is not an emergency but you need medical help fast call 111*

**Police:** 999 or 101

**If you dial 999 and can't speak, or if it's too dangerous to talk, you will be prompted to press 55. If you press 55, the police will know you need help.**

**Fire Brigade:** 999 or 101

**Emergency doctor:** 862232 or 01522 568900  
(out of hours)

**Ambulance:** 999 or 101 (emergency) or  
01522 545281 (Service Control, Lincoln area)

**Gas:** emergency gas escapes call 0800 111999

**Electricity:** emergencies and loss of power  
0800 6783 105

**Water:** Anglian water leakage hotline  
08457 145145

**Samaritans:** 01522 528282 or 08457 909090  
(24 hours a day)

**Addiction Helpline:** 0800 0126088  
or text HELP to 83222



### Welton Larder

- Low income • Tight budget • Debt issues
- Fewer hours • Unexpected bill
- Health problems • Family suffering

**Welton Larder can help**  
**We stock a range of FREE basic food**

**Every Thursday, 11.30am to 3pm at**  
**St Mary's Church, Welton**

**Get help now**  
**Don't wait**

**Everyone welcome**

**Can't get there, call 07946 166210 for**  
**free delivery**

# WELTON SPORTS & SOCIAL CLUB

# FUN DAY

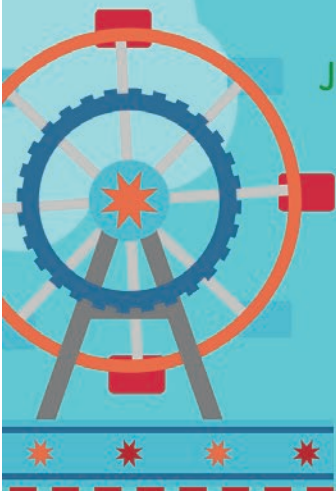
SAT 26TH AUG 23  
12-5PM

THE PLAYING FIELD, RYLAND RD, WELTON

FREE ENTRY

JOIN US FOR LOTS OF FUN!

- BOUNCY CASTLE •
  - FUN FAIR RIDES •
  - STALLS •
  - HOOK A DUCK •
  - ENTERTAINMENT •
  - FOOD •
- AND MUCH MORE!



For more information contact:  
[weltonsportsandsocial@hotmail.co.uk](mailto:weltonsportsandsocial@hotmail.co.uk)



# Community Bible Study

Last year, Dunholme Community Bible Study (CBS) looked at John's Gospel, an eye-witness account of Jesus' life and ministry. We really enjoyed digging deeper into Jesus' teaching and miracles, and learned so much as we unearthed the treasures in it. As we discussed the weekly study, we shared our experiences of life and faith and applied the Bible to modern life.

Next year we will be studying the Book of Acts. We are really looking forward to seeing how the early church grew and how Christianity spread throughout the world. As we come from seven different churches, I'm sure that it will have much to teach us; we often learn as much from each other as we do from the Bible.

We meet at Dunholme Old School on Wednesdays (term-time) from 9.30am to 11.30am. Our first meeting of the year will be 13th September, with a warm welcome, a brief introduction to the study and plenty of tea, coffee and cake. We also have a group that meets on Zoom for those who can't get out. There are several other CBS groups in Lincoln, meeting on different days/times. For more details please contact me.

If you have ever wondered about the Bible, do come and join us. No expertise is necessary; even if you have never read it before, you would still be welcome; all you need is a willingness to look at the questions and join in with the discussion. We look forward to meeting you.

**Jane Hutchinson**

*Tel: 07952 425042 or 01673 866467*

---

## Lindum Ladies Choir



On the evening of Saturday 17th June the Lindum Ladies Choir put on a concert at the Welton Methodist chapel. They sang beautifully, with real control over their vocal power. The concert included a wide range of music and even a wonderfully funny monologue by a member of the choir who is also a tour guide in Lincoln. I can only say that anyone on one of her tours is in for a great treat!

After the music there was coffee and cake for all. A very enjoyable evening.

**Jim Blainey**



You provide the  
elbow grease,  
**WE'LL  
SUPPLY  
THE REST**

Our friendly team of local specialists are on hand to help whatever your requirements.

**Lincoln**

Stephenson Road  
North Hykeham  
**01522 696646**

Ironstone Close  
**01522 442444**  
**mkm.com**



**Hillside Gardening**

A family run business for over 15 years

Full garden maintenance service: mowing, pruning, weeding and general maintenance



No job is too small

For a tidy and reliable service call

**James on 07961 971400**

**HOLMES & FIELDS**

PAINTING & DECORATING SERVICES

*FREE QUOTATIONS*

**ALAN FIELDS**

16 Water Hill, Fiskerton  
Lincoln LN3 4GE

Telephone: **01522 595128**

Mobile: **07900 408125**

**Mike Smith**

*For All Electrical Installations*

Reliable Quality Service

Local Tradesmen

Free Estimates

**07748 785002**

**Fully Qualified Maths Tutor**

Alison Armour, BSc (Hons), Cert Ed  
(ex-William Farr teacher)

GCSE both levels

Call to book

**Tel: 07955 698566**

Scampton



feefo



# Finishing Touch

Florist Shop Est: 1990

**Flowers for all occasions**

Your local independent  
professional florist shop

Monday-Friday 9.30am - 4pm

Saturday 9.30am - 1pm

Same Day & Next Day Delivery



**BRITISH  
FLORIST  
ASSOCIATION**

01673 862635

[www.local-florist.co.uk](http://www.local-florist.co.uk)

direct2florist  
local florists worldwide

Lincoln Road, Welton, Lincoln, LN2 3JE

% GCSE Key Stage  
 1 2 3 + ×  
 11+ Exam **Maths Tuition** =  
 ÷ **Lynn Williams** Resits  
 (Qualified Teacher)  
 Telephone: 01522 753279

Basic Numeracy

## WELTON PLASTERING

PLASTERING CONTRACTORS

\*Dry lining \*Plastering  
 \*Rendering \*Floor screeding  
 \*Coving

FREE ESTIMATES

Tel: 01522 753693

Mob: 07887 501115

## RACHEL'S

### Mobile Hairdressing



In the comfort of your own home  
25 years experience

T: 01673 565227

M: 07941 027291

E-mail: rjkeen@sky.com



## Welton Counselling Practice

Safe  Confidential  Supportive  Non-judgmental

Offering a safe, confidential setting for  
children (11+), adolescents and adults

Relationships • Stress and Anxiety

• Depression • Loss

Low confidence and self-esteem

**01673 863022**

[www.weltoncounselling.co.uk](http://www.weltoncounselling.co.uk)

## Farmers' & Craft Market

Second Thursday of every month  
9am to 12 noon



Upcoming Dates:

- ✓ 10th August
- ✓ 14th September

Buy local – support local



## STAN KILKELLY

Painter and Decorator

30 Years Experience

FREE ESTIMATES

Tel: 01673 860910

Mobile: 07854 199860



## Welton Village Hall

Hall and Rooms for Hire

Competitive rates

Licensed bar

Fully equipped kitchen

E-mail: [weltonvillagehallbookings@gmail.com](mailto:weltonvillagehallbookings@gmail.com)

E-mail: [weltonvillagehallbookings@gmail.com](mailto:weltonvillagehallbookings@gmail.com)



**Pilates Classes  
and Remote Online Coaching**

**Pilates classes at Welton Manor Park**

Wednesday 6.45-7.45pm

Thursdays 1.30 – 2.30pm

Classes also available at

**Nettleham, Glentworth and Ingham  
through the week.**

All training is supported by Online classes  
and a Facebook support group.

In addition I provide remote 1-2-1 coaching,  
with a full set of digital resources using my  
dedicated App.

To find out more, including class times,  
video testimonials and sample classes  
please visit

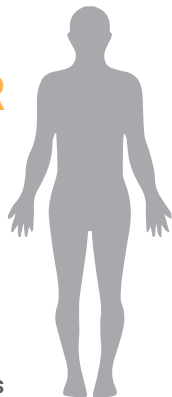
<https://bodiesinbalance.org.uk>

Alternatively you can contact me on  
[Rebecca@bodiesinbalance.org.uk](mailto:Rebecca@bodiesinbalance.org.uk) or call  
me on 07710 493646



**ONE STOP PHYSIO CLINIC NEAR YOU**

**MAKING YOUR  
PROBLEMS  
DISAPPEAR**



Neck  
Back  
Knees  
Shoulders  
Hips  
Ankles  
Pediatrics  
Neurological Conditions

[ishuphysiocentre.com](http://ishuphysiocentre.com)

**LOCATED IN WELTON**

**CALL: 07946 703 404**

**Centurion Garage**

**Welton (on the A46)**

**01673 866548**



● Servicing ● Repairs ● MOT

Cars and Light Commercials  
Monday-Friday 7.30am to 5pm

Telephone Graham on  
**01673 866548**

**Cobblecrete**



**Building**

**EXTENSIONS  
NEW BUILD HOMES  
STONE WORK**

*Love Coming Home...*

**Call: 07900 166849**

[www.cobblecretebuilding.co.uk](http://www.cobblecretebuilding.co.uk)



## Welton Imp Walking Football

Welton Imp Walking Football Club was founded in October 2015, with support from local sponsor Imp Travel (hence the name), and is still welcoming new players to return to this version of the wonderful game or perhaps to start playing for the first time.

We play on one of the best artificial grass FA-approved 3G football pitch facilities in Lincolnshire at Manor Park, with free car park, toilets and changing rooms, and presently have more than 40 members, ranging from the minimum age of 55 to the mid-80s.

We meet every Monday and Thursday at 10.45am and play for an hour. At the moment we have one regular woman player and we would like more. We don't play in an organised league but games are played in a competitive spirit. Those wishing to try the game out for the first time or who are returning after a long time away may prefer to start with our slightly less formal Friday afternoon sessions between 3pm and 4pm, which end with a drink and a chat at Welton Sports and Social Club.

If you are interested, contact John Mulhall on 07881 851500 or e-mail him at johnmulcon@aol.com or just turn up at one of the sessions, either to play, or perhaps just to take a look first. If you do want to play, just come in suitable casual sports clothes and soft moulded-sole trainers.

We look forward to seeing you.

---

## Dunholme Ladies Club

The next meeting of the Dunholme Ladies Club will be on Thursday 3rd August. This will be a special evening when our guest speaker will be Mr Alan Gray MBE. Alan is a former Wimbledon umpire whose career spanned 25 years and he will be giving us an insight into the world of tennis, including both funny and controversial moments. This meeting is open to non-members and the cost to them is £2.50, refreshments included.

The meeting will take place in the main hall of Dunholme Village Hall, starting at 7.30pm.

**Sue Rawson**

Chairlady | 01673 862552

## Temporary Road Closures

Dates	Location	Organisation Responsible	Reason for Restriction	Nature of Restriction
31st July to 4th August	Cliff Road between Chapel Lane and Manor Lane	Anglian Water	Remedial reinstatement	Closure to be implemented for 5 days as and when required during this period

Signage detailing accurate dates and times will be displayed on-site in advance. Diversion routes and vehicular and pedestrian access arrangements will be signposted.

This information is available in map form at [one.network](http://one.network)

For queries or further information, contact LCC Customer Service Centre on 01522 782070.

## BEGINNERS PILATES

Dunholme Village Hall Monday 6pm – 7pm

Jeff Leather – 07813 919662

or 01522 808661

The Benefits of Pilates

- Improved flexibility • Core stability, flatter stomach •
- Better posture • Increased bone density •
- Less back & joint pain • Improved sleep •
- More effective respiratory system •

Traditional mat Pilates suitable for mixed abilities

Prior booking essential due to limited space

## TreeManDan



Professional tree  
surgeon

All aspects of tree and  
hedge work undertaken

Fully insured and  
qualified

Over 20 years experience

Tel: 07786 804209

Treemandan.biz

treehuggaa@yahoo.co.uk

## Dave the Decorator

- Interior Decorating (Only)
- Free Quotes
- 30 Years Experience
- References Available



Call now for a no obligation quotation

Telephone

01673 866631 or 07813 775998

Guarantee the future  
for your nearest and  
dearest

Make a *WILL* and a *LASTING*  
*POWER OF ATTORNEY*

For a free expert consultation  
either at home or online  
telephone **David Dexter FCA**

on 01522 789903

or log on to

[www.LincolnWills.com](http://www.LincolnWills.com)



*No job too small, give me a call.*

For household repairs and refurbishment.

- Taps fixed or replaced
- Bathrooms and kitchens re-siliconed
- Sticking doors fixed or doors replaced
- New kitchen doors and drawer fronts
- Sliding doors / built-in wardrobes
- Shelves, blinds, curtains fitted
- Pictures and mirrors hung
- *Plus lots more ...*

For a free, no obligation quote or a chat  
about your needs get in touch with

**Simon**

**07923 243 449**



[simon@sudbrookehandyman.co.uk](mailto:simon@sudbrookehandyman.co.uk)



@sudbrookehandyman

*I can take credit/debit card payments.*

*Fully insured.*

# Girlguiding

## 2nd Welton Brownies

The Brownies have been busy working towards their 'Have Adventures' theme award in the last few weeks before breaking up for the summer holidays. Learning about fire safety and how to build and light a campfire were on our agenda for our camp stage 2 skills-builder badge, alongside learning how to put up tents and pack suitcases. We even had time to cook smores!

By the time you read this, we will have continued with our adventurous theme and enjoyed an end-of-term climbing party at Active Nation.

To wrap up the year, we gave out lots of well-deserved badges, some theme awards and another Brownie bronze certificate. We also said some sad goodbyes as some of our girls move up to Guides or onto pastures new. It is always a privilege to be part of the girls guiding journeys and see them grow in both height and confidence.

The leaders are looking forward to a bit of a rest but, before that, we will be planning for the new term which starts in September. We have a district pack holiday and a county Brownie activity day at Sudbrooke Scout camp to look forward to already, as well as some more adventurous ideas to keep us busy.

Our waiting list is reducing, so if your daughter is interested in a place with us (even if they are not yet seven) please register your interest at [Girlguiding.org.uk/joinus](http://Girlguiding.org.uk/joinus).

### Claire

*Brown Owl, Thursday Brownies | Tel: 07734 943079*

## Brownies 1st Welton

Coffee, cakes, and tombola

Saturday 16th September

10am to 12 noon

Welton Methodist chapel



We are raising money for our Brownie unit.

Some of the money will go towards paying for the use of the Scout hut, the rest will fund fun activities and resources for our pack



Come and join us - everyone welcome

## Tuesday Wellbeing Group



Feeling lonely or isolated?

Meet new people for coffee and a chat

Quizzes  
Games



Join us on Tuesdays from 10.30am to 12.30pm

Welton Village Hall

## Bathurst Motors Ltd

399 Monks Road, Lincoln LN2 5PY



- Fixed price servicing
- Discount prices
- Courtesy car available
- All work fully guaranteed
- MOTs while-U-wait
- Free collection and delivery

Book online at  
[www.bathurst.co.uk](http://www.bathurst.co.uk)

01522 529018 (MOT/service)  
01522 536565 (car sales)

# I. R. PARKER

FOR ALL  
HARD  
LANDSCAPING,  
BLOCK PAVING,  
PATIOS,  
FENCING,  
CRAZY PAVING,  
ETC.



TELEPHONE:  
WELTON 862940

MOBILE:  
07870 398623

## GARAGE DOOR REPAIRS

Garage door broken, or difficult to open and close?

Lost the key, or require extra security fitting?

Most broken door mechanisms can be repaired and at a much lower cost than fitting a new door.

Rotten or damaged timber frames repaired too.

*Give your tired old door a new lease of life!*

Free, no obligation quote with friendly reliable service

Call David  
on **07414 299 066**

## HACKTHORN ESTATE

High quality residential properties to let in Hackthorn and Cold Hanworth

Commercial letterings in traditional buildings

“PROMOTING A THRIVING RURAL COMMUNITY”

Further details from  
Hackthorn Hall Estate Office  
LINCOLN LN2 3PQ

Tel: 01673 860423

or visit our website  
[www.hackthorn.com](http://www.hackthorn.com)



# Stonecliff Park Social Club

The trip to Mablethorpe went well. Thank you again for your support.

Table tennis has not been forgotten and will be starting in the near future. We have thought of starting a diet club, as strict as you want it to be. It will be a chance to get some support and to swap recipes as well as having a natter. This will depend on numbers so please let Sandra know if you are interested.

## Upcoming events:

- Sunday 20th August  
**Free BBQ** (weather permitting) for members only, 12 noon to 4pm. Bring your own drinks.
- Wednesday 6th September  
**Springfields coach trip.** Departs at 9am and returns at 3pm. £12 members, £17 non-members. If interested, sign in the club room or let Sandra know.
- Friday 29th September  
**Macmillan coffee morning,** 10am to 2pm.
- Friday 20th October:  
**Knit and Natter coffee morning,** with tabletop sale, stalls, raffle and cakes; supporting the RNLI; 9.30am to 1pm.
- Friday 1st December  
**Christmas craft fair.** Tables are £5.  
Please call Sandra on 07947 935170 to book a table.

**Sandra Cash**

## Macular Society Lincoln & District Support Group

Third Friday of the month, 11am to 1pm  
St Clements Court, Chapel Lane, Lincoln, LN1 3AD

Meetings open to anyone affected by central vision loss and their families and carers

For more information, contact Pat on  
01673 860234 or 07774 928794

Macular Society  
Beating Macular Disease



*Celebrating 60 years  
of equine service*



Lessons on the best, safest and most reliable horses from beginners to a high standard in a friendly atmosphere and pleasant surroundings

*Indoor school and outdoor ménage*  
*Cross country and showjumping fences*

BHS & ABRS APPROVED

**01673 860548**

**Rednil Farm Equestrian Centre, Welton**  
*(6 miles north of Lincoln)*

## Accountants for Small Business

- Business Accounts • Tax Returns
- VAT • Bookkeeping • Payroll and more

**Book a Free Consultation**

**01522 699870** • Lincoln • North Hykeham

 **TaxAssist Accountants**  
The Accountancy and Tax Service for Small Business

★ Trustpilot Rated 'Excellent' ★★★★★



## ANDY YATES

UPVC SPECIALIST/JOINER

167 BUNKERS HILL, LINCOLN  
TEL: 01522 537143  
MOB: 07799 375228

DOORS WINDOWS  
CONSERVATORIES  
MISTY BROKEN DOWN UNITS REPLACED  
FACIA, SOFFIT, GUTTERING  
WINDOW AND DOOR REPAIRS UNDERTAKEN,  
HINGES, LOCKS, SEALS, ETC



## Wright Foot Care

**Richard Wright** TCFCP  
Foot Health Practitioner

Start on the  
**WRIGHT**  
foot

Fully Qualified & Insured  
DBS Checked

Appointments: Mon to Sat  
in the comfort of your own home



COVID 19  
recommendations  
& guidelines  
adhered to  
throughout  
treatments

### Treatments include:

Nail Trimming • Thickened Nails • Verrucas  
Corns • Callus • Cracked Nails • Ingrown Toe Nails  
Athletes Foot • Fungal Nail • Diabetic Foot Care

Free Phone Consultation  
**07366 395 307**

@wrightfootcare [www.wrightfoot.care](http://www.wrightfoot.care) ncf

## ASHLEY BLINDS

75 Eastgate, Louth

*Manufacture and Retail of  
Roller, Venetian and Vertical  
Blinds, Roman Blinds, Curtains,  
Awnings, Fly Screens, Plantation  
Shutters, Security Grilles and  
Curtain Tracks*

Home Visits with No  
Obligation Quotes

[www.ashleyblindsltd.co.uk](http://www.ashleyblindsltd.co.uk)

[sales@ashleyblindsoflouth.co.uk](mailto:sales@ashleyblindsoflouth.co.uk)

For appointments call:  
**01507 609760**



**Arborez** LFED  
Reaching New Heights

## Tree Specialists

All aspects of tree and hedge work

Call for a FREE quote  
or advice on

**01522 885423**

Fully qualified and insured

For more info visit  
[www.arborez.co.uk](http://www.arborez.co.uk)  
or email

[info@arborez.co.uk](mailto:info@arborez.co.uk)

National Diploma  
In Arboriculture





**PAUL A. WATSON**

**ROOFING & BUILDING MAINTENANCE**

ALL TYPES OF:

- ROOFING WORK • GUTTERING
- CHIMNEY REPAIRS
- uPVC CLADDING & BUILDING
- MAINTENANCE WORK LARGE OR SMALL

Tel: Lincoln (01522) 753074  
Mobile: 07831 278518

1 High Street, Cherry Willingham  
Lincoln LN3 4AH

**BRIDLEWAY B&B**

Award-winning B&B close to Lincoln  
The characterful rooms have direct access.  
Underfloor heating, wet rooms,  
Nespresso coffee machines.  
Local produce, complimentary cream tea.




**Welton News**  
readers  
**SAVE**  
10%

Grange de Lings, LN2 2LY  
01522 545693  
[www.bridlewaybandb.co.uk](http://www.bridlewaybandb.co.uk)  
[info@bridlewaybandb.co.uk](mailto:info@bridlewaybandb.co.uk)



**ALL NEEDS ENGLISH**  
PRIVATE TUITION | COPY EDITING | EXAM EXPERTISE

**Mrs Julie Dossett**

**07861 650422**

I am an experienced English  
Tutor who can help all abilities

- GCSE and IGCSE
- O-Levels and A-Levels
- The 11+ and Kent Test

**ROGER CHAMPION**  
*QUALITY BUILDER*

FOR ALL YOUR BUILDING NEEDS

*Specialising in:*  
Extensions – Patios  
Block Paving  
Driveways – Garden Walls  
and

**CHAMPION**  
**CONSERVATORIES**

*Quality conservatories  
tailor made to your requirements  
at affordable prices!*

**Tel: 01673 862796**  
**Mobile: 07711 093969**

**No job too small    Free estimates**

Members of Lindsey u3a may be retired but they are NOT tired of life. Plans for August include a guided evening stroll around Folkingham on the 24th and on 21st September there will be a coach trip to York (spaces still available) both organised by the Architecture Group. The Garden Group will be visiting a 'secret garden' in Louth on 22nd August. These are just two of our many interest groups.

At our general meeting on 3rd August our speaker will be Horace Liberty, a distant relative of the Liberty family who came to prominence in the late 1800s when they built a department store on Regent Street in London. Horace will tell us about the history of the family, the store, the business and the importance of their fabric designs.

At our 7th September meeting, Fools Gold will be playing and singing folk songs from NE England. Carol and Steve are acoustic musicians and will entertain us with images, stories and songs from industrial Britain, encompassing tragedy, mystery, romance and more. We might even be singing along!

General meetings are held at Welton Village Hall. Doors open at 9.45am for a cuppa, followed by the speaker at 10.30am. Everyone is welcome.

On 24th August, we will be at the Gardeners' Retreat at Scothern Nurseries for a cuppa and a chat at 10.15am. Newcomers and members are welcome.

Along with Age UK, Aging Better and Independent Age, u3a would like to see a Commissioner for Older People and Ageing established in England to deal with concerns, such as the closing of local banks, health care and social care, expressed by many members.

Should you require any further information please contact me or visit our website.

**Mandy Murphy**

*Telephone 01673 565295 | E-mail [mandy.murphy1396@gmail.com](mailto:mandy.murphy1396@gmail.com) | Website: [www.lindseyu3a.org.uk](http://www.lindseyu3a.org.uk)*

---

## *Welton Golf Society*

On 3rd July, 20 members and two guests made their way to Norwood Park golf club near Southwell for our annual charity day playing for the blue vase. We had our customary bacon butty and coffee before setting off. The course was in good condition, although challenging. Unfortunately the weather was not kind to us, it kept spitting with rain and eventually the heavens opened and we had torrential rain and hailstones with thunder and lightning. We eventually got back to the club house looking like drowned rats. Fortunately there was an excellent piece of gammon with chips and peas to cheer us up.

The winner on the day and holder of the blue vase for the next year was John Sawyer with 37 points; well done John! Second, with 35 points, was Gary Lamb, followed by Andy Hall and Steve Armstrong with 34 points. John also won nearest the pin at 4.36 metres. There were no twos, so the pot continues to climb. The winning guest was Matt Wilkinson with 32 points.

On 7th August we are off to Grimsby golf club and are looking forward to our fish and chips.

**Ian Extance**

# TASKER Joinery

& PROPERTY SERVICES

- Kitchen and Bathrooms
- Full Bedroom Installations
- All Domestic Joinery
- Plumbing and Electricians
- Tiling, Painting and Decorating
- All Internal/External Work

Call Chris for a free quote on

**07929 532686**

taskerjoinery300@gmail.com



We offer Fully Installed and maintained Intruder Alarm Systems. Competitive prices.



Free Site Survey and Quotation

T: 01522532824

E: info@lincolnshirecctv.co.uk

W: lincolnshirecctv.co.uk



CCTV Installation, Maintenance & Consulting.

We design and install modern solutions to all your Home or Business premises. All linked to your Mobile phone. Competitive prices.

# STOP COX

GAS, HEATING & PLUMBING LTD

From Boilers to Bathrooms

Local Friendly Reliable!  
Service Installation Repair  
Free Quotations

m: **07734 391 774**

t: **01522 770 214**

e: [chris@stopcox.co.uk](mailto:chris@stopcox.co.uk)

[www.stopcox.co.uk](http://www.stopcox.co.uk)



## DAVE LINDER

PLUMBING & HEATING

Over 40 years experience

Central Heating  
Bathrooms  
Boilers  
Repairs  
Landlord's Gas Safety Checks, etc.

Tel: 01673 862933

Mob: 07889 248948



Lindsey

## Need Advice?

We offer free, confidential, impartial advice on many issues, regardless of who you are or what your situation is. Drop-in sessions are held at our offices in Skegness, Louth, Mablethorpe and Gainsborough. Session times are on our website ([citizensadvice.org.uk/lindsey](http://citizensadvice.org.uk/lindsey)) or call Adviceline on 0300 3309034.

# Lincoln Metalcraft

## QUALITY ORNAMENTAL GATES AND RAILINGS

*Our select and budget ranges of gates and railings lead the way in stylish metalcraft*



- Gates & Railings – Made to Measure •
- Security Grilles for Doors & Windows •
- Electric Gates – To Protect Garden & Property •
  - Balustrades • Weather Vanes •
  - House Signs • Garden Accessories •
  - Free Estimates • Installation Service •
- Quality Work for Domestic and Commercial •

UNIT 2, BRANSTON BUSINESS PARK, 115 LINCOLN ROAD, BRANSTON, LINCOLN, LN4 1NT

Telephone: 01522 795000 Mobile: 07976 299731 [www.lincolnmetalcraft.co.uk](http://www.lincolnmetalcraft.co.uk)



## Welton Tree Services & Garden Maintenance



### ALL ASPECTS OF TREE AND HEDGE WORK

Commercial & domestic  
Free Quotations

£5million Public Liability Insurance

**07849 974918**



City & Guilds **NPTC**  
Qualified

Find us on



[weltontreeservices@gmail.com](mailto:weltontreeservices@gmail.com) | [weltontreeservices.com](http://weltontreeservices.com)

# Welton Sports & Social Club Football Club News

League	Home Ground	Manager	Assistant
Sunday Premier League	Ryland Road Playing Field	M Ward	S Baker

## Training for trials

Tuesdays, 7pm, Welton Sports & Social Club (WS&SC) playing field. All welcome.

## AGM

Attendees: M Ward, S Baker, J Drabble, J Dembrey, P Westman.

All officers to remain as per last season

**New team sponsor:** A Gostick, who will also be vice president. Thank you, Andy.

## August friendly matches:

Date	Team	Venue	
6th	Bassingham	WS&SC playing field	Kick-off 10.45am
13th	The Venue		All supporters very welcome
20th	The Forge		

**Chairman's Corner:** Good luck for this season, lads.

Yours in sport

**Phil Westman**

*Mr Chairman*



Barry Hawthorne

# Welton Patients' and Doctors' Association

Tickets for the BIG Christmas raffle are now available. I know it's some months away (draw date is 15th December) but the more selling time we have, the more money we'll make. At least that's the theory! Tickets are on sale in local shops, with all drivers, on our table at the Farmers' and Craft Market and at the Autumn Fayre. Tickets are £1 each or £5 for a book of five. If anyone has a business or has contacts with a business willing to offer a prize for this raffle, please let me know. Last year the raffle raised £2,529, a fantastic amount but I would like to exceed that amount this year!

At the Autumn Fayre we are hoping to have an area for the sale of crafts and will advertise this on the posters and on local radio. If you would like to sell your own crafts, please get in touch. Tables are £10.

I want to reiterate that those needing transport to medical appointments should book through the health centre as soon as they know the date. We need as much information as possible, e.g., full address with postcode if your appointment is out of the local area and an estimate of how long the appointment is likely to take.

Health Centre staff are aware that there is some confusion around the new section of the building. They have recently completed a patient survey which was very positive, and are using this feedback to make improvements to the waiting areas. The main entrance is still the one with the ramp as the doors to the new area are not yet in use. Thank you for bearing with the staff while they make these improvements to the surgery.

## Dates for our events in 2023

**Autumn Fayre** – Saturday 28th October

**Christmas lunch** – Friday 8th December

For any further information on any of the above don't hesitate to give me a call.

**Janet Goddard** Tel: 862570

[www.weltonurgery.co.uk/patient-group/about-our-pda](http://www.weltonurgery.co.uk/patient-group/about-our-pda)

## Edward Albert Spence

It is with much sadness that we must tell you that Edward Albert (Ted) Spence passed away peacefully on Sunday 25th June. Ted was a beloved husband, dad, father-in-law and granddad.

If you would like to, donations can be made to the British Heart Foundation, c/o J Marshall, Funeral Directors, 49-51 Queen Street, Market Rasen, LN8 3EN.

**Ian Spence and Helen Dowse**



## Moments in History

**8th:** George Canning died on this day in 1827. He had been prime minister for 119 days, the shortest premiership until Liz Truss' 49 days in 2022. He served under William Pitt the Younger and later became Foreign Secretary. He had a major disagreement with his fellow Irishman and cabinet colleague, Lord Castlereagh, and they fought a duel with pistols in 1809; Canning was wounded in the leg and resigned from the government. Returning as Foreign Secretary in 1822, following Castlereagh's suicide, he supported the independence of Latin American countries from Spain and Portugal.

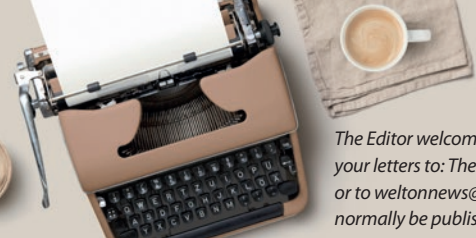
**16th:** Elvis Presley, the 'King of Rock and Roll' died at his home in Memphis in 1977, aged 42. Following a number of set-backs, local studio owner Sam Phillips recognised a new talent in Presley's rendition of a 1946 blues song *That's All Right Mama*, which became a minor hit in 1954 and began Presley's career. More hits followed as did Hollywood films and concerts. By the 1970s his health had started to deteriorate due to his lifestyle and an addiction to prescription drugs. He died in similar circumstances to Catherine the Great and Eveline Waugh: they all died on the lavatory seat.

**16th:** On this day in 1819 at St Peter's Field in Manchester, Yeomanry attempting to arrest the leaders of a gathering advocating parliamentary reform killed a child and wounded a number of people in the crowd. A magistrate then ordered supporting cavalry to disperse the crowd of around 60,000. As many as 15 people were killed and 700 injured (estimates vary) in what became known as the Peterloo Massacre. The immediate reaction of the government was to pass further repressive legislation and it was another 13 years before the Great Reform Act was passed in 1832.

**20th:** Soviet troops, supported by other Warsaw Pact troops, invaded Czechoslovakia in 1968. The invasion was in reaction to the reforms introduced by the new communist regime that had ousted the old Stalinist leaders earlier in the year. The Soviet leader, Leonid Brezhnev, had originally supported the new Czechoslovakian leader Alexander Dubček, but became increasingly concerned about Dubček's reforms, which subsequently became known as The Prague Spring. Brezhnev decided that the reforms were dangerous as they were liable to undermine Soviet hegemony of the 'Eastern Bloc'. Over 100 people were killed in the invasion and a new regime installed in Czechoslovakia, with Dubček demoted and later expelled from the Communist Party.

**24th:** British troops burnt the White House in Washington DC in 1814 during the war of 1812. The attack, which lasted one day and left many municipal buildings burned out ruins, was in retaliation for American attacks in Canada. A subsequent proposal to the US Congress to relocate the capital to Philadelphia was rejected as the southern states did not want it moved north of the Mason-Dixon Line and so the city was rebuilt over the following decade.

**27th:** Krakatoa, a volcanic island off the coast of Java, erupted in 1883, killing more than 30,000 people. The eruption is estimated to have been 13,000 times the force of the atomic bomb dropped on Nagasaki in 1945. It affected the global weather and its deadly effect on crop yields and human and other life forms has never been calculated. Indonesia lies along the intersection of the Eurasian and the Indo-Australian tectonic plates and is the location of the world's largest number of active volcanoes.



# LETTERS to the Editor...

The Editor welcomes views on any topic of interest to your fellow Welton residents. You can send your letters to: The Editor, Welton **NEWS**, c/o Parish Office, 7 Lincoln Road, Welton, LN2 3HZ; or to [weltonnews@gmail.com](mailto:weltonnews@gmail.com). You must include your name and address; the address will not normally be published and your name will be published only with your permission.

Dear Editor,

Now that the double yellow lines have been painted on the approach to St Mary's school from Hazel Grove, it would be assumed that people, mostly parents and carers dropping their children off, would abide by the rules of the road, and not park there.

On the contrary, cars are still parking on the lines regardless, and the ones who aren't quite so brave are mounting the pavements and parking on the grass frontages of houses. Following rain, how long will it be before these grass areas are churned up into a muddy mess.

It is selfish and disrespectful to do this. Be aware that the police have been notified, and will make the school aware for warden controls to monitor.

## Resident of the area

---

Dear Editor,

Thank you for giving me the opportunity to respond to the letter printed in the June issue of the **NEWS** regarding the closing of the access to the land adjacent to the golf course. Firstly, I'm not quite sure what the writer means by the "20-year rule around access". However, the most important thing is that for many years we have let people, non-golfers, especially dog walkers, use this field to walk around the course like a permissive access (not a public access), as long as people respected it, which I think many do. The biggest problem was with people walking on the golf course itself and letting their dogs run loose. This was not fair to the owners of the golf club or to the members of the club who have paid good money to use the course.

The new Central Lincolnshire Local Plan was debated over the last three years and finally adopted earlier this year. West Lindsey, North Kesteven and the City Council approved future sites for development and I think that field is set to be adopted with many others around the county over the next 15 years.

Hopefully, in the future and when the new public open space is created (the 20 acres that will join Manor Park) a new designated public footpath can be created around the boundaries, alongside a 'trim trail' and a new cricket ground for the Welton and Dunholme Cricket Club. (I'd like to take the opportunity here to thank Steve Gibson and the parents involved with the cricket club for doing a fantastic job of bringing cricket to the youngsters in our parish!)

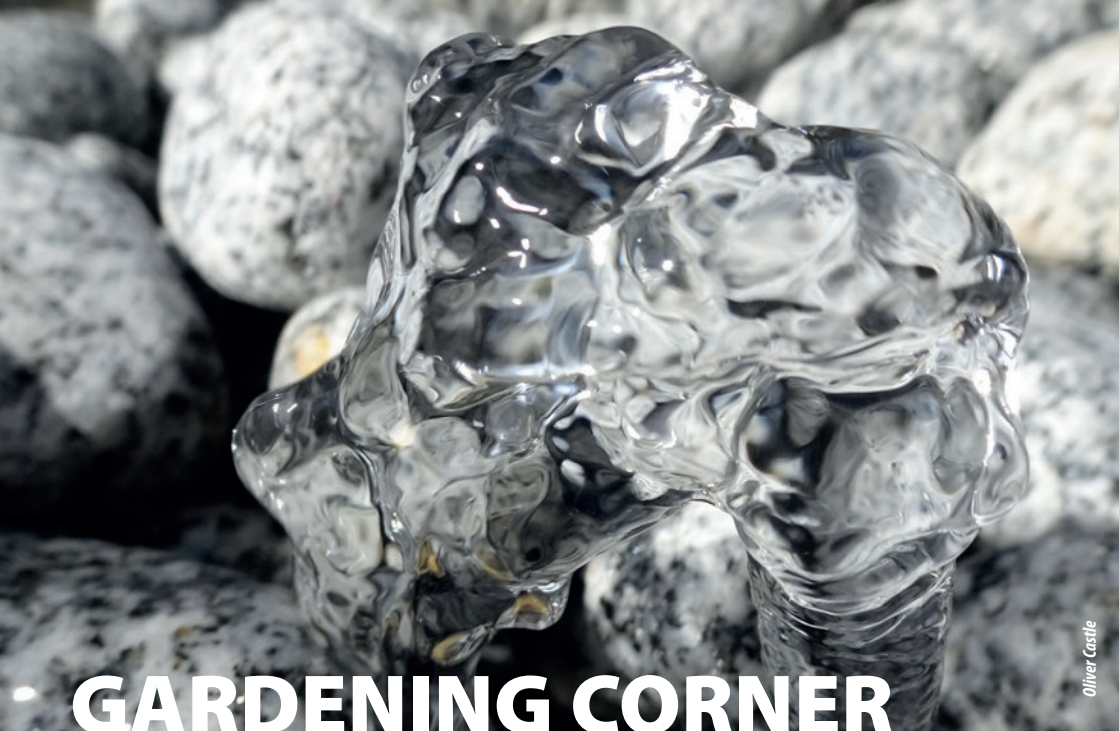
Unfortunately, as I said in my previous letter (Welton **NEWS**, April 2023, page 38), there are a lot more dogs since Covid, which is great, but our pathways in Welton and Dunholme still have many dog poo problems caused by a small minority who, sadly, just don't pick up what their dogs deposit.

## Andy Ottewell

*Editor's notes: The '20-year rule' exists in law to give a right to pass over another person's land in very specific circumstances where custom and practice has prevailed for that length of time.*

*The field referred to by the writer is to the north and west of the golf course, close to Stonecliff Park.*

*Dog mess has also been used recently as a reason for enclosure of the top field at William Farr School (see page 56)*



# GARDENING CORNER

Water can make a fantastic contribution to your garden. The sound of a water feature provides a sense of peace, tranquillity and atmosphere to any setting. Water features come in a variety of forms, from ponds to trickling water fountains; but whatever the shape and the size, spending time adding a water feature to your garden will be time well spent.

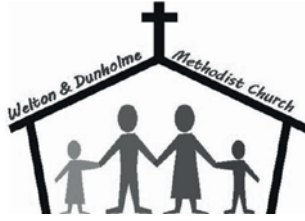
The most important thing is to decide what type of feature you want; whether it's the trickling of water you're after or something else; knowing this is the first step. The next step is to decide how much space you have available and measure this. Not everyone has the space for a full-sized pond but it is possible to create a miniature version.

You also need to consider what materials you want to use to construct your water feature. Most garden centres sell deep barrels and buckets that can retain water for a small pond and you can also buy pumps to create a rippling effect on the water. These pumps can be solar powered so there is no need to plug into a mains electricity supply.

The benefits of water are huge. When water is added to a garden, it immediately attracts a whole range of wildlife and biodiversity. Not only will this be a magnet for nature, but it also caters for many human senses, from sound to touch. You can hear the trickling and ripples that flowing water makes, see the shapes it makes and feel its coolness.

Whatever the shape, size and style of your garden, a water feature will provide a striking focal point. It will draw the eye in from every angle of your garden, helping to change the way you look at it. Reflection in the water will make your garden appear bigger and it will create a unique perspective based on sound and movement.

**Oliver Castle**



## Methodist News

### *Sitting Down*

So, after living in Nettleham for the past 11 years my time here has come to an end. We move on to the next season, which in many circles is called retirement but in the Methodist church is called 'sitting down'. As I write this, the Methodist Conference gave permission this morning (29th June) for this to happen.

I am full of many emotions today as I look back on my 21 years of ministry. There have been many changes and challenges in society and the church in that time and we have lived in Leeds, the Cotswolds and in Nettleham. I have loved all the places and all the people who have become friends.

All this began with a call from God to candidate for Methodist ministry. I resisted for several years but eventually put my life into the hands of the church to test that call. I went into circuit ministry in 2002 and was ordained in 2004.

As we prepare to move on, I have been looking back, as you do, and reflecting on those 21 years. I believe the one thing that has kept me going in the good, and sometimes challenging, times is the conviction of that call. God has been good to us, and our needs have always been met.

As we move on you will have a new Methodist minister living in Nettleham. His name is Revd Richard Mottershead and he will begin work on 1st September. Please pray for him as he makes this move and make him welcome. I know you will. Richard is coming as the new Superintendent Minister of the Lincoln Methodist Circuit.

So, as I draw to a close, I want to thank you for all your support, encouragement and prayers. Over the final weeks of my ministry here there will be chances to say goodbye and maybe have the odd coffee. We have an official farewell service at the beginning of July and my final service in the circuit will be at Nettleham on 6th August. For my farewell in the circuit I was asked to choose a hymn and that was easy, as in every welcome and farewell service I have had the same hymn, *Dear Lord and Father of Mankind*. Here are the words for you:

*Dear Lord and Father of mankind, / forgive our foolish ways! / Reclothe us in our rightful mind, / in purer lives thy service find, / in deeper reverence, praise.*

*In simple trust like theirs who heard / beside the Syrian sea, / the gracious calling of the Lord, / let us, like them, without a word / rise up and follow thee.*

*O Sabbath rest by Galilee, / O calm of hills above, / where Jesus knelt to share with thee / the silence of eternity, / interpreted by love.*

*Drop thy still dews of quietness, / till all our strivings cease; / take from our souls the strain and stress, / and let our ordered lives confess / the beauty of thy peace.*

*Breath through the heats of our desire / thy coolness and thy balm; / let sense be dumb, let flesh retire; / speak through the earthquake, wind, and fire, / O still, small voice of calm!*

## **Alan**

*Superintendent of the Lincoln Methodist Circuit*

## *Services in July – all welcome*

A warm welcome for all – services begin at 10.30am and you are invited for coffee afterwards

**6th** Revd M Amery

**13th** L Shapcott

**20th** Café Church

**27th** Revd AM Barker

## *Coffee Mornings*

We are open every Wednesday and Saturday morning from 10am to 11.30am. There is a wide selection of drinks on offer, plus complimentary biscuits. Children are most welcome and we have a selection of toys on hand to keep them amused.

## *Ladies Fellowship*

We do not meet in August, so as 13th July was our final get-together for a while we marked it with a buffet lunch. All members brought along goodies to share and as the sun shone we relaxed in the garden of one of our members. A good time was had by all and we look forward to meeting again on 14th September. We have a varied programme to look forward to and would like to thank Barbara Ryland for organising it.

## *Film Club: Date for Your Diary*

Film Club will be back in business on 7th September. We are looking forward to meeting up again. If you have not been and want to know more, or would like to book a seat, please ring 860998.

## *All Change*

This summer we will see a change in leadership at the Chapel as the Revd Alan Swann is retiring and will be replaced by Revd Richard Mottershead.

We thank Alan for his wonderful leadership and wish him and Julie all the best. We join with Alan in welcoming Richard and look forward to working with him in the church and our wider community.

Gates & Fencing  
Log Stores  
Pergolas  
Decking



Hedge Cutting  
Porcelain  
Paving  
Patio's

**GREEN ROCK  
LANDSCAPES**

07833 523581

Greenrocklandscapes@outlook.com

# Get your Garage into Shape!

Upgrade your garage this summer into a space to be proud of.



From our door, to yours.

- SPACE-SAVING – MAXIMISE GARAGE HEADROOM
- SECURITY-ENABLED AUTO-LOCKING SYSTEM
- CHOICE OF 21 COLOURS TO MATCH YOUR HOME
- REMOVAL AND RECYCLING OF YOUR OLD DOOR
- DEDICATED GAROLLA AFTER-CARE TEAM

**PRICES START AT £895**

(OPENINGS UP TO 2.4M/55MM WHITE SLATS)



**GAROLLA**  
ELECTRIC GARAGE DOORS

T: 01673 280 046  
Lines are open 7 days a week

BESPOKE ELECTRIC DOORS  
MANUFACTURED IN THE UK  
GAROLLA.CO.UK



# Launch of the Summer Reading Challenge

On Saturday 8th July, the library launched the Summer Reading Challenge with a craft event linked to some of the characters involved on the *Reading Challenge Passport*. It was lovely to see children of different ages attend. One of our library volunteers read a story followed by the children creating their crafts.

Following a visit to Welton St Mary's school and Dunholme St Chad's school, the headteachers have offered an incentive to the children to complete the challenge. The names of all children who complete the challenge will be put into a hat and one lucky winner from each school will receive a book voucher to spend as they choose.

The Summer Reading Challenge involves reading six books, chosen by the child, over the summer and collecting stickers to put on their reading passport.

## Hazel

*Administrative Assistant, Welton Parish Council*



# Parish Council Meeting Report

## **The full council met on Monday 10th July**

In the public forum, a resident enquired whether the council was aware of the imminent fencing of the remainder of the grounds of William Farr School. This was an understandable move but might have the unexpected consequence of making any future provision of a protected cycle path to link Welton and the approach to the A46 impossible. The school had not been aware of this issue but had expressed support in principle: would the parish council (PC) write to Lincolnshire County Council to express its wish either to incorporate the building of the cycle path into the fencing project or, at least, to ensure that the fencing did not in any way prevent the creation of the cycle path in the future?

The chairman and the clerk stated that the PC's rules did not allow it to discuss or pass a resolution on any matter that had not been included in its agenda: it had not been made aware of this matter early enough to include it on this occasion and, although work is due to start and be completed during the school summer holiday, the chairman concluded that the best the PC could do was to bring forward the relevant committee meeting and consider it there next week.

Another resident raised the matter of the proposed development behind Eastfield Lane and enquired whether any progress had been made on the suggestion at the recent Planning and Development committee meeting that Eastfield Lane might be designated as 'a quiet lane'. He was told that this remains under consideration.

The same resident also enquired whether any progress had been made towards the transfer of the land to be donated for recreational purposes off Hackthorn Road. The chairman stated that this was at an impasse: the number of houses to be completed and sold on the site to trigger the transfer had increased and the developers were now saying that health and safety concerns would prevent transfer until the entire site was built out, which might be a matter of several years. There was an exchange of views about whether it would be desirable to put possible uses of the land to public consultation at this stage. Some councillors were not keen to do this until the point of transfer but it was agreed that it could be included in the public consultation on the new neighbourhood plan, work on which is now under way.

The meeting then commenced.

The clerk reported that a dispute with HMRC over repayment of VAT had been resolved in the PC's favour. HMRC had agreed to refund the full amount with interest. Nevertheless, the PC decided that it would be good practice to undertake an audit of its VAT processes at a cost of £700.

In relation to planning matters, the PC had objected to application 146801 for development at Eastfield Lane and 146645 at 77 Ryland Road.

In the review of PC committee meetings, it was reported that the PC has purchased a 'coronation bench', in keeping with the other commemorative and memorial benches in Welton. This will be paid for from £6,000 of grant funding available to improve the look of the village centre.

Cllr Briggs reported on the work he had been asked to undertake to review the PC's employment and complaints procedures. He proposed the streamlining of existing committees into one that



would deal with all matters relating to employment and standards of behaviour. Membership would be large enough to ensure that each stage of a process, including appeals, could be dealt with by a separate panel. The meeting approved the proposals and Cllr Briggs agreed, now that the structure had been agreed, to develop the details.

The PC spent some time considering an approach by consultants conducting a feasibility study on behalf of Welton and Dunholme Cricket Club. The chairman was unenthusiastic and expressed surprise that WLDC had funded the study without an accompanying impact study. He also felt that greater efforts should have been made by the consultants to approach Dunholme PC as well, in view of the club's title. The PC was still awaiting the club's audited accounts, which had been requested previously. Concern centred on whether the club believed that they would be given space in the donated land off Hackthorn Road (see above).

The chairman stated that 'it would appear that they have no Plan B if Plan A doesn't work'. Other councillors expressed a willingness to hold discussions with the consultants on the clear basis that there was no commitment and no assumptions should be made. The PC agreed a proposal put by Cllr Briggs that it should agree to engage with the consultants without any commitment to a contribution of any kind, that the consultants should engage similarly with Dunholme PC and that wider public consultation should take place as part of the neighbourhood plan work.

### **Graham Nicholls**

*Please note that this is a report of the meeting and includes only items that the **NEWS** thinks will be of interest to readers. These are not the formal minutes, which can be found on the parish council website but not until after their formal approval at the next full council meeting.*

## **WELTON-BY-LINCOLN PARISH COUNCIL NOTICE BOARD**

### **August and September Meetings**

**There are no meetings in August**  
**Monday 11th September, 7.30pm: Full Council**

Meetings are held at 7.30pm, unless otherwise stated, in the Pavilion at Manor Park or in the parish office as stated on the agenda.

Agendas are posted at least three days prior to the meeting on the parish office notice board and the website ([www.welton-by-lincoln-pc.gov.uk](http://www.welton-by-lincoln-pc.gov.uk)).

To meet with a parish councillor personally, please make an appointment.

**Julie Murray, PSLCC, Clerk to the Council:** [clerk@welton-by-lincoln-pc.gov.uk](mailto:clerk@welton-by-lincoln-pc.gov.uk)

**Louise Gibbs, Deputy Clerk to the Council:** [deputyclerk@welton-by-lincoln-pc.gov.uk](mailto:deputyclerk@welton-by-lincoln-pc.gov.uk)

**Telephone:** 01673 860336

A selection of leaflets, bus timetables, bus pass application forms, village maps, local walks and information regarding flooding, etc., can be found in the parish office

If you have any questions or matters you wish to report, please call into the parish office.

Opening hours: Monday to Thursday 9am to 3pm, Friday 9am to 12 noon

**Follow us on Facebook and Twitter**



## G. Bradley Property Services Ltd

**Call:** 07882064001

**Email:** gbradley.ps@gmail.com

We bring over fifteen years experience in a variety of areas and offer a wide range of services:

- Kitchen fitting
- Joinery
- House renovations/extensions
- Garage conversions
- Garden rooms
- Landscaping

[gbpropertieservices.co.uk](http://gbpropertieservices.co.uk)



### For latest projects:



/GBPS01



@gb\_propertyservices

# MORTGAGES & PROTECTION

## SIMONE HAYWOOD

vouchedfor  
TOP RATED ADVISER 2021  
★★★★★

vouchedfor  
TOP RATED ADVISER 2022  
★★★★★

Welton based Mortgage and Protection specialist  
Free initial consultation

REMORTGAGES - FIRST TIME BUYERS - HOME MOVER - CAPITAL  
RAISING FOR HOME IMPROVEMENTS - INVESTMENT PROPERTIES

LIFE ASSURANCE - CRITICAL ILLNESS COVER - INCOME  
PROTECTION - BUILDINGS & CONTENTS



[simone@brneedham.co.uk](mailto:simone@brneedham.co.uk) 07903 339233

BR Needham (Financial Services) Ltd

YOUR PROPERTY MAY BE REPOSSESSED IF YOU DO NOT KEEP UP REPAYMENTS ON YOUR MORTGAGE  
FOR MORTGAGES WE MAY BE PAID BY COMMISSION OR A FEE - USUALLY £295, OR A COMBINATION OF  
BOTH



**BR Needham**  
FINANCIAL SERVICES LTD

# Scothern Nurseries Plant Centre



Open 7 days a week

**Gardeners**

*A great range of*

**Retreat Tea room**

*plants, gifts,*

Serving hot & cold food

*cards, vouchers,*

Tea room closed on

*produce & more*

Mondays (except on

Bank Holidays)



Dunholme Road, Scothern,  
Lincoln. LN2 2UD  
Tel: 01673 862297  
www.scothern-nurseries.com

# S.J. SKEPPER

PAINTER and DECORATOR  
*City and Guilds Holder*



FREE ESTIMATES



Tel: 01522 402147  
Mobile: 07930 227414

# ROBERT TRUELOVE & SONS

*Established 1922*

A QUALITY RE-UPHOLSTERY  
SERVICE FOR OVER 90 YEARS

**SPECIALISING IN ALL ASPECTS OF**

- RE-UPHOLSTERY ● THREE-PIECE SUITES
- CHAIRS ● NEW CUSHIONS FITTED
- REPAIRS

FREE FRIENDLY ADVICE AND ESTIMATES  
WITHOUT OBLIGATION

**TEL: (01522) 690917**

MOBILE: 07949 259231

IVY HOUSE, OLD WOOD,  
SKELLINGTHORPE, LINCOLN LN6 5UA

# SIMON J HUMPHREYS

*Specialist in  
built-up felt  
roofing*



8 Sudbrooke Lane  
Nettleham

Telephone: 01522 751561  
Mobile: 07905 092174



**Jumble  
Sale**

**Saturday 2nd September  
1pm**

Dunholme Village Hall  
In aid of: St Barnabas Hospice

Small items, such as clothes and bric-a-brac can be left in the garage at 39 Honeyholes Lane, Dunholme. All items, including larger items, can be brought to the hall on the morning of the sale.

# Dave's Plastering and Home Improvement Services

Plastering ● Partition Walls  
Tiling ● Painting & Decorating  
Kitchen & Bathroom Fitting  
Doors Fitted ● Flat Packs Built

Tel: 07415 275121  
Email: draw1973@hotmail.com



# Hackthorn Church of England Primary School

By the time you read this, we will have held our leavers' service. It is always a poignant event as the Year 6s share their memories of their time at Hackthorn. Their speeches are always filled with stories of embarrassing moments and accounts of their favourite trips, subjects and events, and then the customary memories which tug at our hearts. It is then my opportunity to share my memories and those of the staff about each Y6 pupil. This year it will also be my turn to share my own memories of my time at Hackthorn as I will be taking up a new position in September as Headteacher at Dunholme St Chad's school. I have been on quite an emotional rollercoaster thinking about what I will say. Hackthorn has been such a special place for me over the last nine years. It has wonderful children, fantastic staff, supportive parents, dedicated governors, and an amazing community. I will always have fantastic memories of my time here.



Many people think that schools 'wind down' in the final weeks...not at Hackthorn! We have been incredibly busy with Y6 pupils attending secondary school induction days and meeting our new reception pupils. We have also had sports day, which was well attended by parents. The children competed in mixed-age team sporting activities in the morning and were amazing as they encouraged one another and, in the afternoon, we were able to complete all the competitive races, even though we thought we might have to run and take cover at one point.

KS1 staff decided to leave their DT project until the last two weeks of term. Mrs Dodson has always been honest about her feelings related to DT; they come close to those on computing! The children were quite ambitious with their designs, so we used a 'hair-mometer' to judge Mrs Dodson's stress levels and the success of the children's efforts. Surprisingly, her hair remained 'reasonably' coiffed.

KS2 pupils came back buzzing from their trip to Magna, having thoroughly enjoyed the interactive exhibits as they explored the wonders of science and technology.

We have compiled an academic review for this year, which you can see on our website.

**Mrs Appleby** *Headteacher*

School Tel: 01673 860295 | [www.hackthorn.lincs.sch.uk](http://www.hackthorn.lincs.sch.uk)



# HEARING BETTER IS EASY

## WITH THE NEW DIGITAL HEARING AIDS

Finding your perfect hearing aid is easier than ever because my independence guarantees you access to the biggest choice and best value for money.



Claire Armitage  
SRCP RHAD MSHAA

FOR MORE INFORMATION,  
PLEASE CALL CLAIRE  
**EASY FREE PARKING**

**01522 567 081 or 07947 637 474**

The Lincoln (Private) Hospital, Nettleham Road,  
Lincoln, LN2 1QU  
[www.clairearmitage.co.uk](http://www.clairearmitage.co.uk)  
Email: [clairearmitage.rhad@btinternet.com](mailto:clairearmitage.rhad@btinternet.com)

## IMP Therapy UK

### Foot Care

*For all routine foot care needs, including nail cutting and treating corns, callouses and hard skin*

*Home visits available*

#### Contact:

Marianne  
Foot Health Practitioner (MCFHP,  
MAFHP)

Tel: 07825 991587

E-mail: [maz@potterclan.co.uk](mailto:maz@potterclan.co.uk)

## J. Marshall Funeral Directors

Independent Family Funeral Directors Est. 1953

Our compassionate staff will give you all the professional care, sympathetic advice and support that you may need, 24 hours – 7 days a week.

*“Serving and supporting the community in your time of need for over 65 years.”*

- Traditional Burial or Cremation Services
- Bespoke Funeral Design Services ● Green Eco Funerals ● Horse Drawn Hearse Funerals
- Assured pre-paid Funeral Bonds future proofed against rising costs. A plan can save your family the worry and expense, and make it easier for your loved ones at a difficult time
- Members of the National Association of Funeral Directors

A: 51 Queen Street  
Market Rasen, LN8 3EN  
T: 01673 843725  
E: [info@jmarshallfd.co.uk](mailto:info@jmarshallfd.co.uk)

Golden  
Charter  
Later Life  
Planning



## LT Garden Maintenance

- One-off or Regular Visits
- All Types of Work Undertaken

**01673 861 275 or 07906 666 084**

- Responsibly Sourced
- Barn Dried & Delivered

## HARDWOOD LOGS



# Parish Council Notices

## Parish Clerk

Do you know your parish clerk? It's Julie Murray. Here are just some of that things that Julie does in her role:

- Organises the council meetings, to which all are invited, and is skilled in a range of disciplines to ensure that the council runs properly and within the law.
- Juggles a range of skills from finance and accounting, staff management and HR, to understanding and interpreting ever-changing legislation.
- Acts as a key point of contact between elected officials and your community.
- Adheres to a professional code of ethics that stresses integrity, impartiality, confidentiality and commitment to serving the public.
- Manages play areas, recreation grounds, sport facilities, allotments, community centres, cemeteries, public toilets and more.
- Helps to run community events, including the Christmas lights switch on, jubilee and coronation celebrations and remembrance commemorations.



## Hot Weather Safety

It'll probably be raining when you read this but, even so, please don't underestimate the harm that high temperatures can cause to the elderly, the vulnerable, and our pets.

When the weather turns warmer one of the key messages is to keep a close eye on older people, young children, and people with long-term health conditions; their bodies can struggle to cope with the heat and they are at greater risk.

If you have a dog, you're probably well aware that dogs die in hot cars. You may not know that dogs may also die on hot walks. The RSPCA website has some useful information on keeping pets cool in the summer months.



## Facebook Page

We have a Facebook page. Please 'like' our page and follow us to keep up to date with what we are doing in the village.

## Julie Murray, PSLCC, Clerk to the Council

Tel: 01673 860336 | [www.welton-by-lincoln-pc.gov.uk](http://www.welton-by-lincoln-pc.gov.uk)

Julie Murray: [clerk@welton-by-lincoln-pc.gov.uk](mailto:clerk@welton-by-lincoln-pc.gov.uk)

Louise Gibbs: [deputyclerk@welton-by-lincoln-pc.gov.uk](mailto:deputyclerk@welton-by-lincoln-pc.gov.uk)

# Litter Picking

Recently, we have been pleased to support the efforts of some junior litter pickers, including the Cubs, who made a great job of cleaning up at Manor Park (see picture). I'm hoping that by the time you read this some of us adults will also have been out for a summer clean-up on our local roads.

Of course, while picking up litter is something we can all do, the best solution would be not to drop it in the first place. On that note, I recently spent a month touring in France for the first time in several years and, perhaps because I have become more sensitised, I was struck by the almost total absence of litter on roadside verges, whether motorways or more minor roads. The contrast with the UK was dramatic.

Of course, there could be a number of reasons: France has a much larger land mass and a population density of less than half that of the UK, meaning that French roads are much less busy than ours. It may be too that France devotes more resources to street cleaning than we do: for example, it's not much good providing bins in lay-bys if they are not emptied before they overflow. Still, there may also be more nuanced, cultural factors at play. French people, historically, have done less snacking and tended not to eat between meals, which were in themselves more formal affairs, reflected in the continuing recognition by employers of meal breaks in a way which seems to have gone by the board here.

Most French roads, even the comparatively minor ones, are well-equipped with rest areas (*aires de repos*) with picnic tables, waste bins and, often, public toilets, all of which results in less eating on the go and, possibly, less consumption of heavily-packaged pre-prepared food and drink. But this doesn't account for the non-food rubbish which we find routinely on our roadside verges and which isn't apparent on French roads.

Perhaps we just have to face the sad fact that we are generally that much more slovenly in our habits and that much less bothered by what happens to the stuff we discard.

**Graham Nicholls**






 **Powell Legal Consultancy**  
 Providing solutions, cutting costs

**Wills and Powers of Attorney**

Free home visits ♦ Local personal service  
 Legally qualified Will Writer (LLB PGDip LP)  
 Call: **0778 658 5728**

E-mail: [liz@powelllegalconsultancy.co.uk](mailto:liz@powelllegalconsultancy.co.uk)  
 Website: [www.powelllegalconsultancy.co.uk](http://www.powelllegalconsultancy.co.uk)

 Fellow of the Society of Will Writers  
 Fully Insured

**TL CHIMNEY SWEEP SERVICES**  
**Fully Insured and Qualified Member of the Guild of Master Chimney Sweeps and HETAS Approved Chimney Sweep**

- **Chimney sweeping** – Open fires, wood burning and multi fuel stoves, Aga and Rayburn flues and liners swept and vacuumed using the latest equipment and techniques.
- **Birds' nests and blockages** – Professionally and efficiently removed.
- **CCTV** – Chimney inspections and reports.
- **Clean Professional Service** – Friendly, clean and reliable service.
- **Safety and efficiency advice** – Provided by a professional Chimney Sweep.
- **Insurance Certificate** – Issue for all chimneys or appliances swept.

**Telephone: 01427 787845**  
**Mobile: 07971 831966**  
 E-mail: [info@chimneysweeplincolnshire.co.uk](mailto:info@chimneysweeplincolnshire.co.uk)  
 Web: [www.chimneysweeplincolnshire.co.uk](http://www.chimneysweeplincolnshire.co.uk)

**NETTLEHAM PLASTERING**  
 The Complete Professional Plastering Service



DOMESTIC  
 COMMERCIAL  
 NEW BUILD  
 AND  
 EXTENSIONS  
 INSURANCE WORK UNDERTAKEN  
 FREE ESTIMATES

**Tel: 01522 595793**  
**Mob: 07809 106119**

**TV REPAIRS**  
**All makes**  
*Free collection and delivery*

>> Aerials installed from £65 + VAT  
 >> New TV sales  
 >> LCD, LED & Plasma  
 >> Multi-room extensions  
 >> Freeview & Freesat  
*Free 5 year warranty on selected TVs*

**We sell**

>> Washing Machines  
 >> Fridges & Freezers  
 >> Free Delivery & Installation  
*Interest Free Credit Available*

**Lincoln Teleservice Ltd**  
 123-125 Burton Road Lincoln  
**01522 526255**

**LINCOLNSHIRE LANES**

*Manor Farm, East Firsby, LN8 2DB*

**LOG CABINS - GLAMPING - CAMPSITE**

Two Scandinavian Lodges : Each sleep six people with three bedrooms, large lounge / diner, bathroom, kitchen, veranda, enclosed garden with a patio, TV (inc Netflix, Catch up), WIFI.

Glamping : Bell Tents, Romany Wagon and The Lost Ark in the woods.

Camping : Three large fields. Electric and non-electric pitches. Toilet / shower block.

On site : Food vans, bush craft activities, footpaths to beautiful walks, small play area, room for ball games, games hut etc.

More info, prices, availability and book online:  
[www.lincolnshire-lanes.com](http://www.lincolnshire-lanes.com)

 07827818094  [info@lincolnshire-lanes.com](mailto:info@lincolnshire-lanes.com)



## From the Archives

### *From the pages of the Welton NEWS in August 2003...*

District Councillor Malcolm Parish, who had recently been elected as an independent for Welton, wrote that, due to his disillusionment with the lack of leadership in the independent group at West Lindsey, he had decided to transfer to the Conservatives to ensure that he could be effective in council affairs.

Hugh Margrave had the misfortune to stir up a wasps' nest and ended up being cared for by a first responder, ambulance staff and A&E at Lincoln. He was grateful, he wrote, for the prompt attention that prevented a difficult situation becoming serious.

William Farr school had become a 'Leading Edge Partnership School'. This entailed: leading innovation, spreading excellence, encouraging partnership with other schools to raise standards across the educational system. Headteacher Paul Strong was delighted with the school's latest achievement.

The HSBC bank advised that its mobile bank service to Welton would be reduced to one day a week.

Stuart Cadzow reminisced about growing up in the 50s, 60s and 70s. Baby cots were covered in brightly coloured lead-based paint, we did not wear helmets while riding bikes and drank water from the garden hose. We ate dripping sandwiches and bread and butter pudding washed down by fizzy drinks, all without putting on weight as we played outside all day. There were no playstations, video games or mobile phones but we did climb and fall off trees, build go-carts that crashed into nettles and, if ever we ran foul of the local bobby, we knew our parents would side with him! And the result of these reckless times: a generation of the best risk-takers and innovators ever; the past 50 years has seen an explosion of new products and services.

### *and from the August 2013 issue ...*

The parish council was consulted regarding two proposed developments off Hackthorn Road and on Ryland Road, Dunholme, and would be expressing concerns regarding the strain on the already over-stretched infrastructure in the village, particularly the drainage/sewers, schools, transport, parking in the village centre and health provision.

A writer asked; *Can you imagine working for a company that only has a little more than 600 employees but has the following employee statistics: 29 have been accused of spouse abuse; 7 have been arrested for fraud; 9 have been accused of writing bad cheques; 17 have directly or indirectly bankrupted at least two businesses; 3 have done time for assault; 71 cannot get a credit card due to bad credit; 14 have been arrested on drug-related charges; 8 have been arrested for shoplifting; 21 are currently defendants in lawsuits; 84 have been arrested for drink driving; and collectively they cost each and every British tax payer nearly £100 in expenses?* The organisation was, in fact, the House of Commons, whose 635 members continue to restrict our freedom while enjoying subsidised alcohol and the best 'corporate' pension scheme in the country!

# SJS FENCING

Installation and repairs of  
all domestic fencing

All size jobs undertaken

Small, local, friendly  
business

Call for a free quote

Tel 07760 332787

## NEIL BARK

DOMESTIC APPLIANCE ENGINEER

### • Fast Efficient Repairs Service

- WASHERS
- DISHWASHERS
- TUMBLE DRYERS
- ELECTRIC COOKERS
- REFRIGERATION

07771 553496

21 Hykeham Road, Lincoln LN6 8AA



## The Foot Health Clinic

Professional Foot Care in the  
comfort of your own home.

All aspects of foot health including,  
ingrown nails, thickened nails, corns,  
callus, diabetic foot care and verrucae.

### Leila Shaw

S.A.C DIP FHPT, S.A.C DIP RFHP

Stainton House  
Stainton-by-Langworth  
LN3 5BL

Tel: 01522 420920  
Mobile: 07849 391977



No VAT  
on Labour



**NOCK  
ELECTRICAL**  
Part P Approved

Fully Qualified with  
over 30 Years Experience

For all your Domestic Installations  
Providing a quality service  
at competitive prices

[www.nockelectrical.co.uk](http://www.nockelectrical.co.uk)

Phone 01522 853060





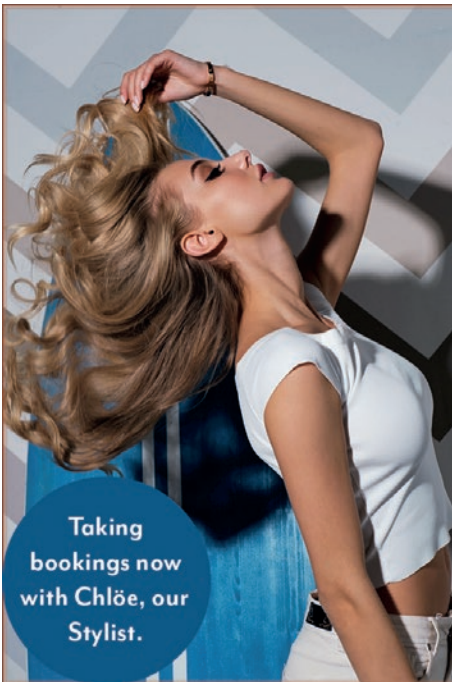
your commercial and domestic  
electric vehicle chargepoint  
specialists in Nettleham



**Domestic EV Charging from £1,000+VAT\***

Contact us today for a free quotation, call 01522 699578

\*Subject to individual property requirements and existing electrical arrangements



Taking  
bookings now  
with Chlöe, our  
Stylist.

summertime  
living is *easy* with  
a *hot* new style

Book appointments on

**01673 862 732**

 One Hair and Beauty  
[www.numberonehair.co.uk](http://www.numberonehair.co.uk)

Ample free parking.  
Open Tuesday to  
Friday 9 - 7  
and Saturday 9 - 5

One Hair and Beauty,  
1 Ryland Bridge, Welton,  
Lincoln, LN2 3RP

  
**one**  
hair & beauty

# Welton Library and Community Hub

As reported elsewhere in the **NEWS**, our Summer Reading Challenge, *Ready, Set, Read*, got off to a fine start at our launch event, with many children aged between 4 and 11 signing up. There is still time to join, just call into the library with a youngster who will be encouraged to read six books during the school holidays and collect stickers, with a small prize at the end if they achieve the reading target. It's all free; library membership is required but that is straightforward and also free.

We have another event linked to the challenge, with new stories and crafts, on Saturday 12th August at 10am, based on the sporting theme of *Ready, Set, Read*. All children are welcome, whether or not a library member or reading challenge participant.

We recently helped set up another free service provided by Lincolnshire Libraries. This service is called Access Mobile Library and is designed specifically for anyone who cannot reach a static or mobile library due to location, health, mobility issues or caring responsibilities. Books will be delivered to and collected from the person's home address and the whole Lincolnshire Libraries catalogue is available, so there is plenty of choice.

Another plus is that access to the Internet is not necessary; you can telephone and speak to the helpful staff who will guide you through, and help you join the library if you are not already a member. The lady we recommended to the service was a housebound centenarian and she is delighted once again to be able to read books that she has selected herself.

So, if you or someone you know would benefit from this service, please ring 07483 017085 or, if you prefer, e-mail: [graham.owen@gll.org](mailto:graham.owen@gll.org).

**Mike**  
*Library Volunteer Co-ordinator*

## Welton Library and Community Hub

Manor Park, Hackthorn Road, Welton LN2 3PA

### Opening Hours:

**Monday:** 12 noon to 5pm

**Tuesday:** 9.30am to 2.30pm

**Wednesday:** 10am to 12 noon

**Saturday:** 10am to 12 noon

(closed on bank and public holidays)

Updates will be advertised around the village and on the Welton **NEWS** and parish council websites



Barry Hawthorne



## William Farr School Flypast

### *The Red Arrows helped William Farr school celebrate its 70th anniversary with a spectacular flypast*

The world-famous Royal Air Force aerobatic team paid their special tribute to William Farr Church of England Comprehensive school towards the end of sports day on Friday 23rd June.

Headteacher, Jonathan Knowler, thanked the RAF display team, saying; *We are grateful they could fit us into a busy schedule. Seeing the Red Arrows fly over the school was quite a moment for students and staff and a wonderful tribute to our school and its proud history. The flypast was spectacular.*

William Farr school was opened in 1952 on the site of RAF Dunholme Lodge, a World War II bomber station, bought in 1946 by William Farr, the vicar of Welton. The school was named after him when he died in 1955.

Mr Knowler said: *This is a school steeped in RAF history and we are proud of our traditions and links to the armed forces. It is fitting that the RAF's famous aerobatic team, based in Lincolnshire, played a role in celebrating our 70th anniversary. What a sight it was over the school and the village.*

In October 2022, the school marked its anniversary with a landmark ceremony at Lincoln Cathedral in front of more than 2,000 students, staff and special guests.

### **William Farr School**

*[More photographs of the Red Arrows and the sports day can be found on the Welton **NEWS** website. Ed]*



## Welton and Dunholme Cricket Club

It's been a summer of cricket in the village like no other. Scores of kids have been enjoying the sport of cricket over the summer months.

On a regular Thursday, around 40-50 kids from the village and surrounding area take part in Welton and Dunholme Cricket Club's training sessions.

The club's under 9s, 10s and 11s have welcomed teams to William Farr school playing field for a series of fixtures with some great results along the way.

The club's All Stars sessions for the youngest players have also drawn to a close, with many kids getting their first taster in the sport.

While regular training finished at the end of July, the club is holding a summer camp on 8th, 9th and 10th August for kids aged 5 to 11. To book or for more information, e-mail [juniocricket@wdcc.org.uk](mailto:juniocricket@wdcc.org.uk).

The club always welcomes new players and volunteers, just e-mail us for more information.

### Welton & Dunholme Cricket Club

[hello@wdcc.org.uk](mailto:hello@wdcc.org.uk)



**WELTON & DUNHOLME CRICKET CLUB**

**JUNIOR SUMMER CAMP**

**venue:**  
William Farr School, Lincoln Road, Welton, LN2 3JB

**AUGUST 2023**

**TUESDAY 8TH / WEDNESDAY 9TH / THURSDAY 10TH**

**AGE GROUP 5 - 8 - 10.30AM TO 12.30PM**

**AGE GROUP 8 - 11 - 1.30PM TO 3.30PM**

**£10 PER CHILD PER SESSION**

Open to boys and girls and new players of all abilities welcome

**TO BOOK OR FOR MORE INFORMATION PLEASE CONTACT**

[juniocricket@wdcc.org.uk](mailto:juniocricket@wdcc.org.uk) or **07764 699644**

WE ARE  
MACMILLAN  
CANCER SUPPORT



Coffee, cakes, and  
tombola  
in aid of Macmillan  
Cancer Support

**When: Monday 25th September**

**Where: Welton Village Library**

**Time: 2pm to 3.30pm**

Every cake shared helps us be there for someone affected by cancer, from diagnosis through treatment and beyond. Together we can make sure that no one faces cancer alone.



**Come and join us – everyone is welcome**



## Table Tennis

**Welton Table Tennis Club  
meet Tuesday evenings,  
7pm to 9pm at the  
Chapel, Cliff Road,  
Welton**

A friendly club for all abilities  
Ages 8 to 80+ welcome  
No leagues, we just play for fun  
Contact John on 860823

*Have fun...keep fit!*





**YOUR  
NEW  
CAFÉ**

# STOKES WELTON CAFÉ

Delicious, Light Bites & Sweet Treats Served Daily

5a Lincoln Rd, Welton,  
Lincoln, LN2 3HZ  
Tele: 01673 847878

**Opening Times**  
 Mon - Fri - 08:30 - 15:30  
 Sat - 09:00 - 17:00  
 Sun - 09:00 - 15:30

Find out more



## South Lincs Electrical

NICEIC approved contractors  
Fully Part P Compliant

**All Domestic,  
Commercial  
and Industrial  
Electrical work  
undertaken**

*No job too large or too small*

**Call Bradley Zealand  
Mobile: 07717 882972**

b.zealand@southlincselectrical.co.uk  
Facebook.com/Southlincselectrical

**Would you like an honest,  
dependable and **AFFORDABLE**  
\*police checked cleaner  
to clean your home?\***

Typically

**£15**  
per hour inc.

**£10**  
£10 off your first clean  
with this advert



**TIME FOR YOU™**  
DOMESTIC CLEANING

As Featured on BBC 2's Working Lunch, Ch4's 'House Swap',  
BBC1's Look East & preferred cleaning supplier to CH5's  
Cowboy Builders

Call Time for You **TODAY!**

**01522 251026**

lincshshire@timeforyou.co.uk

or visit

[www.timeforyou.cleaning](http://www.timeforyou.cleaning)

\*police checked cleaners on request





# NATURE WATCH by Jack Falcon

**H**ouse sparrows can still be seen feeding a brood in their nests while our summer visitors are already getting ready for the long migration back to Africa. Swifts will have left by the middle of the month and the swallows will line up on overhead wires and gather together in flocks before they take off for the winter.

Butterflies on the wing this month include gatekeepers, which are particularly attractive in orange and brown, and the female meadow brown which has wonderful eyespots. Grasshoppers can be heard but rarely seen in the long grass; the most common species are the common brown, common green and meadow grasshoppers.

At this time of the year black ants simultaneously emerge and swarm. This is usually on very warm and sultry days. The females are the ones with the temporary wings which, after their short flight, they will bite off when they find a new location to colonise. Despite the heat it is best to keep the windows and doors shut to keep them outside.

Bats can be spotted at dusk flying over water, hunting for insects. They can be lured to fly close if you flutter a white tissue above your head; don't worry, they won't hit you!

The Lincolnshire Wildlife Trust's bushcraft club and bushcraft courses offer a hands-on wilderness experience that is fun, rewarding and challenging. Children and adults alike can learn the fundamentals of fire-lighting, shelter building, campfire cooking, animal tracking and fieldcraft, all under the expert supervision of experienced education officers and bushcraft instructors from the Whisby Education Centre. This offers a unique experience in the natural setting of a Lincolnshire Wildlife Trust

nature reserve and an excellent opportunity for families to have a go at bushcraft and experience wildlife first-hand. Time spent on these courses in a woodland can help build confidence, communication skills, teamwork and awareness of the natural world. Lincolnshire Wildlife Trust is the only provider in Lincolnshire where children can have a truly bushcraft



Oliver Castle





Nathan Jacklin



Nathan Jacklin



Nathan Jacklin



Oliver Castle



Nathan Jacklin

experience throughout the year. Contact the Whisby Education Team for further details on 01522 696926, or visit their website - [whisbyeducation@lincstrust.co.uk](mailto:whisbyeducation@lincstrust.co.uk). Places must be booked in advance.

August can be hot with little rain (we hope!) and if that is the case keep that birdbath topped up. Birdbaths are best placed off the ground and out in the open so that the birds can be on the lookout for danger, especially from cats. You may find your birdbath is visited

even by the normally shy wrens and dunnocks.

Thinking ahead to autumn, you could start letting flowers and, perhaps, a few vegetables, if you grow them, run to seed to provide food for birds and other wildlife; and leave some windfall apples, pears and plums for birds to feed on. Birds are also likely to be tempted by soft fruits such as raspberries and gooseberries.

Towards the end of the month, nature gives the first hints that the best of the year is over and soon there will be a chill in the air. The blackbirds won't be heard again until February and the thrushes until the end of the year. This lack of song is accentuated by their bedraggled looks as they go through their moulting period. The tits and finches are also silent, but the robins may take up their song again towards the end of the month as they mark out their territories for the coming winter.

# William Farr to Complete Fencing

William Farr School has just announced that it intends to complete the fencing of the school grounds, following the purchase of the remaining section of the site from Lincolnshire County Council. This will enable the erection of perimeter fencing around the top playing field and to the front of the school. The work is expected to be completed during the summer holidays.

The school's press release, available on its website, refers to the school's duty to safeguard its pupils during the school day as the main reason for the fence but also continuing problems with vandalism on the field, which has cost the school £16,000 this year, and dog mess and broken glass.

Concerns have been raised in the past by local residents about the reduction in public access to the school site, which was bought by the then vicar, Revd William Farr, to create a local secondary school. The school opened in 1952. Headteacher, Jonathan Knowler, said; *'We need a secure boundary around the school to provide a safe and purposeful learning and recreational environment for our students. This is what parents expect for children... whom we are trusted to educate and take responsibility for.'*

Steps will be taken to preserve the existing public footpath from Lincoln Road to Honeyholes Lane, which will be fenced in to prevent access to the school grounds.

Concerns have also been raised that the fence may prevent the completion of the protected cycle path from Welton to link up with the new path on the approach to the A46 roundabout. This has been championed by Welton's county councillor, Sue Rawlins. A spokesperson for William Farr School said that the cycle path had not been mentioned in any of their discussions with the county council but that the school would provide any support it could for such a development. The **NEWS** has asked the county council for comment.

Another new development at the school, enabled by the acquisition of land to the side and rear of the school from Lincolnshire County Council, will allow the development of a new single storey block for post-16 pupils, containing study room, recreation room, offices and associated support spaces. The planning application (PL/0051/23) can be viewed on the LCC website and is open for public consultation until 4th August.

**Graham Nicholls**



*Selling fish at the Farmers' Market*

*St Barnabas Hospice is a local independent charity that delivers free, high quality, compassionate end-of-life care and support to patients, their families and carers.*

St Barnabas was recently the Lincolnshire Co-op's chosen Champion in various locations in the county. Every time a member shopped in a participating Co-op between March and June, a donation was made to us. Money was also raised through activities, staff and community fundraising events and collection boxes throughout spring. A total of £165,929 was raised for local hospices, with St Barnabas receiving the majority.

Rebecca Franks, Director of Patient Care at St Barnabas says:

*We are so grateful to the Lincolnshire Co-op and all its supporters for this incredible donation. It will make a huge difference in the care we provide.*

*To give an indication of how far this money will go, £896 pays for one day of a patient's stay in our hospice for specialist end-of-life care. We also offer our care and support in people's own homes around the county, which comes at a cost of £18.84 per hour.*

*Apart from vital medical care, we also provide wellbeing services such as counselling, bereavement support, welfare and benefits advice. £57.10 pays for our bereavement helpline to run for a day so we can give urgent support to those struggling with their grief.*

*All our care and support are free of charge to the patient as we believe everyone should have access to high-quality, compassionate care when they need it.*

### **Do you dare to walk over fire for St Barnabas Hospice?**

Daredevils can take on a glowing-hot challenge to support St Barnabas Hospice and participate in the charity's second-ever Fire Walk. This is a great way to challenge yourself and raise money for our Hospice. It is also a really fun gift, or a teambuilding exercise for staff at your workplace. Once registered, we kindly ask you to raise a minimum of £85.

### **Rudy's Run**

This is aimed at all children at school, nursery, pre-school and sportsclubs, a chance to get involved, dress up and have a little fun while spreading some Christmas cheer.

Information on all fundraising activities, including how to register for the Fire Walk and Rudy's Run, can be found on our website.

Most of all, please get in touch if you or a loved one needs our help and support. All our services can be found on our website or you can call us.

### **Deborah Yarwood**

Fundraising officer | Phone: 07785 727114 or 01522 540300

Deborah.Yarwood@Stbarnabashospice.co.uk | www.Stbarnabashospice.co.uk





**K CARCHEDI**  
ACCOUNTANCY

Your local qualified accounting specialist providing an affordable professional service to individuals and small to medium sized businesses.

**Services**

Manual and Xero computerised bookkeeping  
Sole trader and partnership accounts  
VAT Returns Making tax digital  
Self-Assessment tax returns  
HMRC set up and more.....

**Contact for a free initial consultation.**

Tel: 01673 565132    Mobile: 07971 673613  
Email: [Contact@kcarchediaccountancy.co.uk](mailto:Contact@kcarchediaccountancy.co.uk)  
Web: [kcarchediaccountancy.co.uk](http://kcarchediaccountancy.co.uk)

**RAF Ingham Heritage Centre**

"Home of the Polish Bomber Squadrons"



**VOLUNTEERING?**

With Lockdown now easing, we're looking forward to welcoming back our Volunteer Team.

We're always looking for new volunteers, are you interested?

We have roles to suit everyone:

**Administrative to Painting, Gardening to Building work, Mechanics to Fundraising, Visitor Guide to Carpentry, Reception/Shop to Cafe**

You'll be warmly welcomed, and we'll find a volunteering role that will suit you, your skills and abilities, and the time you can offer.

**Contact**

Interested in Volunteering, please contact:  
[raffingham@hotmail.co.uk](mailto:raffingham@hotmail.co.uk)    Tel: 07787805978



# Medical Aesthetics

- **Anti-wrinkle injections**
- **dermal fillers**
- **lip fillers**
- **face rejuvenating**
- **skin tag removal**
- **ear wax microsuction removal**



AESTHETICS BY LADY JESSICA (ANP/RNA)  
Clinical expertise in Aesthetic Services

**07808704249**

[Lady-jessica@outlook.com](mailto:Lady-jessica@outlook.com)

 **Aesthetics by Lady Jessica**

# Index to Advertisers

## Accommodation

Bridleway B&B.....	25
Lincolnshire Lanes Log Cabins .....	46

## Accountants

K Carchedi Accountancy .....	58
Tax Assist Accountants .....	23

## Alarm Systems

Lincolnshire CCTV .....	27
-------------------------	----

## Air Conditioning

SEP Ltd.....	9
--------------	---

## Architects

Ryland Design.....	IBC
--------------------	-----

## Beauty Treatments

Aesthetics by Lady Jessica .....	58
----------------------------------	----

## Blinds

Ashley Blinds .....	24
---------------------	----

## Building Services

Andy Yates.....	24
Cobblecrete.....	18
Dave's Plastering/Home Improvement.....	41
GB Property Services .....	40
MKM Building Supplies.....	15
Nettleham Plastering .....	46
Paul A Watson.....	25
Roger Champion .....	25
Ryland Design.....	IBC
StopCox.....	27
Tasker Joinery & Property Svcs .....	27
Welton Plastering.....	17

## Car Servicing, Repairs, MOT

Bathurst Motors Ltd.....	22
Centurion Garage.....	18

## Chimney Sweep

TL Chimney Sweep.....	46
-----------------------	----

## Chiropody

Foot Health Clinic.....	48
IMP Therapy UK .....	43
Wright Footcare .....	24

## Cleaning Services

Time for You.....	53
-------------------	----

## Counselling

Welton Counselling.....	17
-------------------------	----

## Domestic Appliance Repair

Neil Bark.....	48
----------------	----

## Education/Tuition

All Needs English.....	25
Maths Tuition .....	17
Maths Tutor.....	15

## Electrical Work/Electricians

Mike Smith Electrical .....	15
Nock Electrical.....	48
South Lincs Electrical .....	53

## Electric Vehicles

EV Motion .....	49
-----------------	----

## Fish and Chips

Welton Chippy .....	OBC
---------------------	-----

## Fitness, Health & Wellbeing

Beginners Pilates.....	20
Bodies in Balance.....	18

## Florists

Finishing Touch .....	16
-----------------------	----

## Funeral Director

J Marshall .....	43
------------------	----

## Garage Doors

Garage Door Repairs.....	22
Garolla.....	36

## Gardening/Tree Services/Fences/Railings/Gates/Garden Sculpture

Arborez.....	24
Cobblecrete.....	18
Green Rock Landscapes .....	36
Green Stripe.....	OBC
Hillside Gardening.....	15
IR Parker .....	22
Lincoln Metalcraft .....	28
LT Garden Maintenance.....	43
Scothern Nurseries .....	41
SJS Fencing.....	48
TreeManDan .....	20
Welton Tree Services .....	28

## Golfing

The Falconer.....	IFC
-------------------	-----

## Hairdressers and Barbers

Hair Sense .....	4
One Hair and Beauty.....	49
Rachel's Mobile Hairdressing.....	17

## Handyman

Sudbrooke Handyman .....	20
--------------------------	----

## Hearing Aids

Claire Armitage .....	43
-----------------------	----

## Joinery

Andy Yates.....	24
Tasker Joinery.....	27

## Legal and Will Services

Lincoln Wills (David Dexter).....	20
Powell Legal Consultancy.....	46

## Mortgage Advice

Simone Haywood .....	40
----------------------	----

## Painting and Decorating

Dave the Decorator.....	20
Holmes and Fields.....	15
SJ Skepper .....	41
Stan Kilkelly .....	17

## Pet Services

K9 Trim and Style .....	11
-------------------------	----

## Physiotherapy

Ishu Physio Centre .....	18
--------------------------	----

## Plastering

Dave's Plastering .....	41
Nettleham Plastering .....	46
Welton Plastering.....	17

## Plumbing and Heating

Dave Linder .....	27
SEP Ltd.....	9
StopCox .....	27
Warm Lincs Plumbing & Heating.....	11

## Property/Property Services

GB Property Services .....	40
Hackthorn Estate.....	22
Tasker Joinery/Property Svcs .....	27

## Pubs/Clubs/Restaurants

The Black Bull .....	2
The Falconer.....	IFC
Sandwich Sense .....	4
Stokes Welton Café .....	53
Welton Chippy .....	OBC
Welton Sports & Social Club .....	13

## Riding Stables

Rednil Farm .....	23
-------------------	----

## Roofers

Paul A Watson .....	25
Simon J Humphreys .....	41

## Shops/Retail Services

Lakeside Butcher.....	IBC
-----------------------	-----

## TV Repairs

Lincoln Teleservices Ltd .....	46
--------------------------------	----

## Upholstery Services

Robert Truelove and Sons.....	41
-------------------------------	----

## Windows/Conservatories/Doors

Andy Yates.....	24
Garolla.....	36
Roger Champion .....	25

## **Useful Contact Information**

*If your organisation is not listed, contact the editor to ensure that you are included in future issues. Please notify the editor of all changes in names, titles or phone numbers*

### **Churches**

St Mary's Vicar	565244
Methodist Minister	01522 702887
Ladies Fellowship	861461
St Hugh's RC Church, Lincoln	01522 522971
Threshold Church	07956 140167
Community Bible Study	866467

### **Clubs/Associations**

Bridge Club	861700
Dunholme Camera Club	860469
Dunholme Friendship Club	861172
Family Twinning Association	862181/861284
Film Club	860998
Lindsey u3a	565295
LIVES First Responders	01507 525999
Ramblers' Association	863444
Royal British Legion	01522 502083
Sports and Social Club	861298
Stonecliff Park Social Club	07947 935170
Welton and District Craft Class	866141

### **Community Services**

Dial-a-Ride	01522 514477
Dunholme Village Hall	07789 368765
Lincolnshire Library Service Helpdesk	01522 782010
Lindsey Citizens Advice	01427 810914
Lincoln Citizens Advice	03444 111444
Macular Soc Support Group	07774 928794/860234
Post Office	862926
Shoebox Appeal	07789 368765
Welton Litter Pickers	860454
Welton Village Hall	

[weltonvillagehallbookings@gmail.com](mailto:weltonvillagehallbookings@gmail.com)

### **Education**

Dunholme St Chad's CofE Primary School	860597
Hackthorn CofE Primary School	860295
St Mary's CofE Primary Academy	860339
William Farr School	866900
William Farr School Friends	07753 963538

### **Men's Groups**

Men's Breakfast	861461/860823
Tremendoes	862011

### **Parish, District and County Councils**

Parish Council: Office & Chairman	860336
County Cllr Sue Rawlins	885545
District Cllr Seb Hague	07538 962248
District Cllr Diana Rodgers	863385
District Cllr Paul Swift	07801 253706
Parish Paths Coordinator	860336
Tree Warden	860336
West Lindsey District Council (general)	01427 676676
WLDC out-of-hours (Duty Standby Officer)	01427 613960
Lincolnshire County Council	01522 552223
Lincoln City Council	01522 881188

### **Police**

Police – emergency	999
Police – non-emergency	101

### **Play Schools and Pre-Schools**

Busy Hands Pre-School	863101/07895 950756
Dunholme Pre-School	866583
Welton Pre-School	860077
William Farr Pre-School	07759 937556

### **Sports and Leisure**

Dunholme Indoor Bowls Club	861683
Lincoln Tennis Academy	07739 582533
Music is Fun	862432
Rednil Farm Riding Stables	860548
Scothern Cricket Club	866285
Welton & Dunholme Cricket Club	07796 273063
Welton Football Club (Boys and Men)	07584 653877
Welton Golf Society	860823
Welton Imp Walking Football	07881 851500
Welton Manor Golf & Fishing Club	862827
Welton Sports AFC Football Club	07919 694232
Yoga	01522 717850/07722 663498

### **Welton Family Health Centre**

Appointments, Enquiries, Dispensary	862232
Community Nursing Team	01522 533331
Health Visiting Team	01522 843000
Midwives	01522 512512
Non-Emergency Out-of-Hours	111
Patients' & Doctors' Association	862570

### **Women's Groups**

Breast Care	860837/860823
Dunholme Ladies Club	862552
National Women's Register	862665

### **Young Peoples' Activities/Clubs**

Army Cadets	01522 528109
Brownies (Mondays)	07919 417127
Brownies (Thursdays)	07734 943079
Guides (Fridays)	860853
Scout & Guide Hut Committee	862168
Welton Kids' Club	07748 432428

### **Sir Edward Leigh, MP**

Office telephone	02072 196480
E-mail	<a href="mailto:edward.leigh.mp@parliament.uk">edward.leigh.mp@parliament.uk</a>
Post	House of Commons, London, SW1A 0AA Conservative Association, PO Box 295, Gainsborough, DN21 9EZ
Surgery appointments	07587 147116
Website	<a href="http://www.edwardleigh.org.uk">www.edwardleigh.org.uk</a>
Twitter	<a href="https://twitter.com/edwardleighmp">twitt.com/edwardleighmp</a>

Ryland  
Design  
| architecture

RYLAND DESIGN  
ARCHITECTURE

ARCHITECTURE | PLANNING | PROJECT COORDINATION  
SURVEYING | LAND DEVELOPMENT | ENERGY ASSESSMENT

MARKET RASEN | 01673 860 100 LINCOLN | 01522 899 296  
HAMILTON PLACE, 20 KING STREET, MARKET RASEN, LN8 3BB

The   
Lakeside Butcher  
of Welton



FOOD HYGIENE RATING

FOOD HYGIENE RATING

0 1 2 3 4 5

VERY GOOD



info@thelakesidebutcher.co.uk  
www.thelakesidebutcher.co.uk  
**01673860547**

Ryland Bridge Welton  
LN23RP

*"A very warm welcome from myself and the team.  
We are dedicated to great customer service and  
great food and look forward to sharing our passion  
and enthusiasm with you."*

Mark  
*'The Lakeside Butcher'*



Connect with us on  
**facebook**

# GARDEN MACHINERY SPECIALISTS

## Domestic & Commercial

- MAIN AGENTS FOR YAMAHA ATV's
- ESTABLISHED OVER 14 YEARS
- OVER 100 MACHINES ON DISPLAY
- EXPERIENCED STAFF

- SALES • PARTS
- SERVICE • HIRE



HAYTER

COUNTAX



AL-KO

Large Stocks Of Garden & Horticultural Machinery

- Lawnmowers - Ride on & Pedestrian • Chain Saws • Strimmers
- Brush Cutters • Hedge Cutters • Generators • Shredders
- Disc Cutters • Tools • Protective Clothing



**Spares**  
For All Makes & Models  
Mail Order Service Available  
Used & Reconditioned Machines  
Part Exchange Available



Lincolnshire's Only



Husqvarna Premier Dealer

Visit our new showroom



**Green Stripe**  
GARDEN MACHINERY

**01673 844020**

[www.greenstripe.net](http://www.greenstripe.net)



aaaaagreenstripe

Open Mon-Fri 8-5

Bishop Bridge, Near Market Rasen (4 miles East of Caenby Corner on the A631) LN8 3LY

# Welton Chippy

Delicious Fish & Chips

	Lunch		Tea	
Monday	11:30	13:30	16:30	20:00
Tuesday	11:30	13:30	16:30	20:30
Wednesday	11:30	13:30	16:30	20:30
Thursday	11:30	13:30	16:30	20:30
Friday	11:30	13:30	16:30	20:30
Saturday	11:30	13:30	16:30	20:00
Sunday	Closed		Closed	

We offer a telephone and collect order service

Welton Chippy, 8 Cliff Road, Welton, Lincoln, LN2 3JJ

Tel: 01673 860312

Bring a copy of this advert with you and get a free large side order with any purchase